

Product Information Crawler Excavator

R 936 Compact

Litronic®



Generation

6.1

Engine

190 kW / 258 HP
Stage V

Operating Weight

33,800 – 38,250 kg

Bucket Capacity

0.55 – 2.15 m³

LIEBHERR

Experience the Progress

R 936 Compact

Maintenance

- Innovative servicing concept, with service points accessible from ground level
- Concept for lateral access to uppercarriage and large maintenance platform
- Engine oil, hydraulic oil, fuel and urea (diesel exhaust fluid) levels visible on the display

Equipment

- Large choice of types and lengths of equipment, including a two-piece boom
- Longer lifespan of components and higher productivity thanks to automatic centralised lubrication system
- Safety check valves for hoist and stick cylinders as standard

Safety

- Panoramic visibility with no obstructions and camera on the rear and the right side for enhanced safety
- Tilttable console for easy and safe access to cab
- ROPS-certified cab structure
- Emergency exit via the rear cab window
- Right window and windshield in laminated and tinted glass





Comfort

- Spacious, air-conditioned work space
- Airsprung seat with vertical and longitudinal suspension
- Easy-to-use high resolution 7" colour touchscreen
- Completely retractable front cab window
- New LED lighting as standard

Engine

- New engine that conforms with the Stage V European exhaust emissions standard
- Automatic engine idling / speed increase, controlled via joystick sensors

Undercarriage

- Robust, reliable X-frame undercarriage, easy to secure thanks to its integrated eyelets
- Easy maintenance
- Maintenance-free travel gear and track rollers with lifetime lubrication for easy maintenance
- Extra storage as an option
- Dozer and stabilizer blade as an option

Technical Data



Engine

| | |
|------------------------------|---|
| Rating per ISO 9249 | 190 kW (258 HP) at 1,800 RPM |
| Torque | 1,337 Nm at 1,350 RPM |
| Model | Liebherr D944 A7-25 |
| Type | 4 cylinder in-line |
| Bore | 130 mm |
| Stroke | 150 mm |
| Displacement | 8.0 l |
| Engine operation | 4-stroke diesel Common-Rail Turbo-charged and after-cooler |
| Exhaust gas treatment | Stage V DOC + DPF + SCR Passive regeneration by thermo management |
| Cooling system | Water-cooled and oil cooler, after-cooled and fuel cooled |
| Air cleaner | Dry-type air cleaner with pre-cleaner |
| Fuel tank | 450 l |
| Urea tank | 46 l |
| Electrical system | |
| Voltage | 24 V |
| Batteries | 2 x 180 Ah/ 12 V |
| Alternator | Three-phase current 28 V/140 A |
| Engine idling | Sensor controlled |



Hydraulic Controls

| | |
|-----------------------------|--|
| Power distribution | Via control valves with integrated safety valves, simultaneous and independent actuation of undercarriage, swing drive and equipment |
| Servo circuit | |
| Equipment and swing | Proportional via joystick levers |
| Travel | – Proportional control via foot pedals or removable levers – Speed pre-selection |
| Additional functions | Proportional regulation via foot pedals or mini-joystick |



Hydraulic System

| | |
|---|---|
| Hydraulic system | Positive Control hydraulic system. Demand-based, double independent pump flows Features high system dynamics and sensitivity provided by integrated system controlling |
| Hydraulic pump | |
| For equipment and travel drive | Liebherr, variable displacement, swashplate double pump |
| Max. flow | 2 x 245 l/min. |
| Max. pressure | 380 bar |
| Pump management | Electronic pump management via the integrated system controlling (CAN-BUS) synchronous to the control block. Open circuit for the rotation |
| Hydraulic tank | 290 l |
| Hydraulic system | max. 520 l |
| Hydraulic oil filter | 1 main return filter with integrated partial micro filtration (10 µm) |
| Cooling system | Compact cooler, consisting of a water cooler, with hydraulic oil cooler, gearbox oil cooler, fuel cooler and after-cooler cores and hydrostatically driven fan |
| MODE selection | Adjustment of engine and hydraulic performance via a mode pre-selector to match application, e.g. for especially economical and environmentally friendly operation or for maximum digging performance and heavy-duty jobs |
| Engine speed and performance setting | Stepless adjustment of engine output and hydraulic power via engine speed |



Swing Drive

| | |
|----------------------|---|
| Drive | Liebherr swashplate motor with integrated brake valve and torque control |
| Transmission | |
| Swing ring | Liebherr compact planetary reduction gears Liebherr, sealed race ball bearing swing ring, internal teeth |
| Swing speed | 0 – 10.0 RPM stepless |
| Swing torque | 106 kNm |
| Holding brake | Wet multi-disc (spring applied, pressure released) |



Operator's Cab

| | |
|-------------------------------|--|
| Cab | ROPS safety cab structure (roll-over protection system according to ISO 12117-2:2008) with windscreen, totally or partially retractable (only upper part), under cab roof, LED work headlights integrated in the ceiling, a door with a sliding window (can be opened on both sides), large storing box and several stowing possibilities, shock-absorbing suspension, laminated right hand side and roof windows, all windows tinted, separate extensible window shades for the sunroof window and windscreen, cigarette lighter and 24 V plug, 12 V plug, cup holder |
| Operator's seat | Liebherr-Comfort seat, airsprung with automatic weight adjustment, vertical and longitudinal seat damping including consoles and joysticks. Seat and armrests adjustable separately and in combination (adjustable in width, height and inclination), seat heating as standard |
| Arm consoles | Oscillating consoles with seat, tiltable console left |
| Operation and displays | Large high-resolution operating unit, intuitive, colour display with touchscreen, video-compatible, numerous setting, control and monitoring options, e.g. air conditioning control, fuel consumption, machine and attachment parameters |
| Air-conditioning | Automatic air-conditioning, recirculated air function, fast de-icing and demisting at the press of a button, air vents can be operated via a menu. Recirculated air and fresh air filters can be easily replaced and are accessible from the outside. Heating-cooling unit, designed for extreme outside temperatures, sensors for solar radiation, inside and outside temperatures The air conditioning system contains fluorinated greenhouse gases |
| Refrigerant | R134a |
| Global warming potential | 1,430 |
| Quantity at 25 °C* | 1,340 g |
| CO ₂ equivalent | 1.92 t |
| Vibration emission** | |
| Hand/arm vibrations | < 2.5 m/s ² , according with ISO 5349-1:2001 |
| Whole-body vibrations | < 0.5 m/s ² |
| Measuring inaccuracy | According with standard EN 12096:1997 |
| Noise emission | |
| ISO 6396 | L _{pA} (inside cab) = 71 dB(A) |
| 2000/14/EC | L _{WA} (surround noise) = 105 dB(A) |



Undercarriage

| | |
|---|---|
| Versions | |
| NLC | Gauge 2,390 mm |
| SLC | Gauge 2,590 mm |
| LC | Gauge 2,740 mm |
| Drive | Liebherr swashplate motor with brake valves on both sides |
| Transmission | Liebherr compact planetary reduction gear |
| Maximum travel speed | Low range 2.6 km/h High range 4.2 km/h |
| Drawbar pull on crawler | 325 kN |
| Track components | D7, maintenance-free |
| Track rollers/ Carrier rollers | 9/2 |
| Tracks | Sealed and greased |
| Track pads | Triple grouser |
| Holding brake | Wet multi-disc (spring applied, pressure released) |
| Brake valves | Integrated into travel motor |
| Lashing eyes | Integrated |



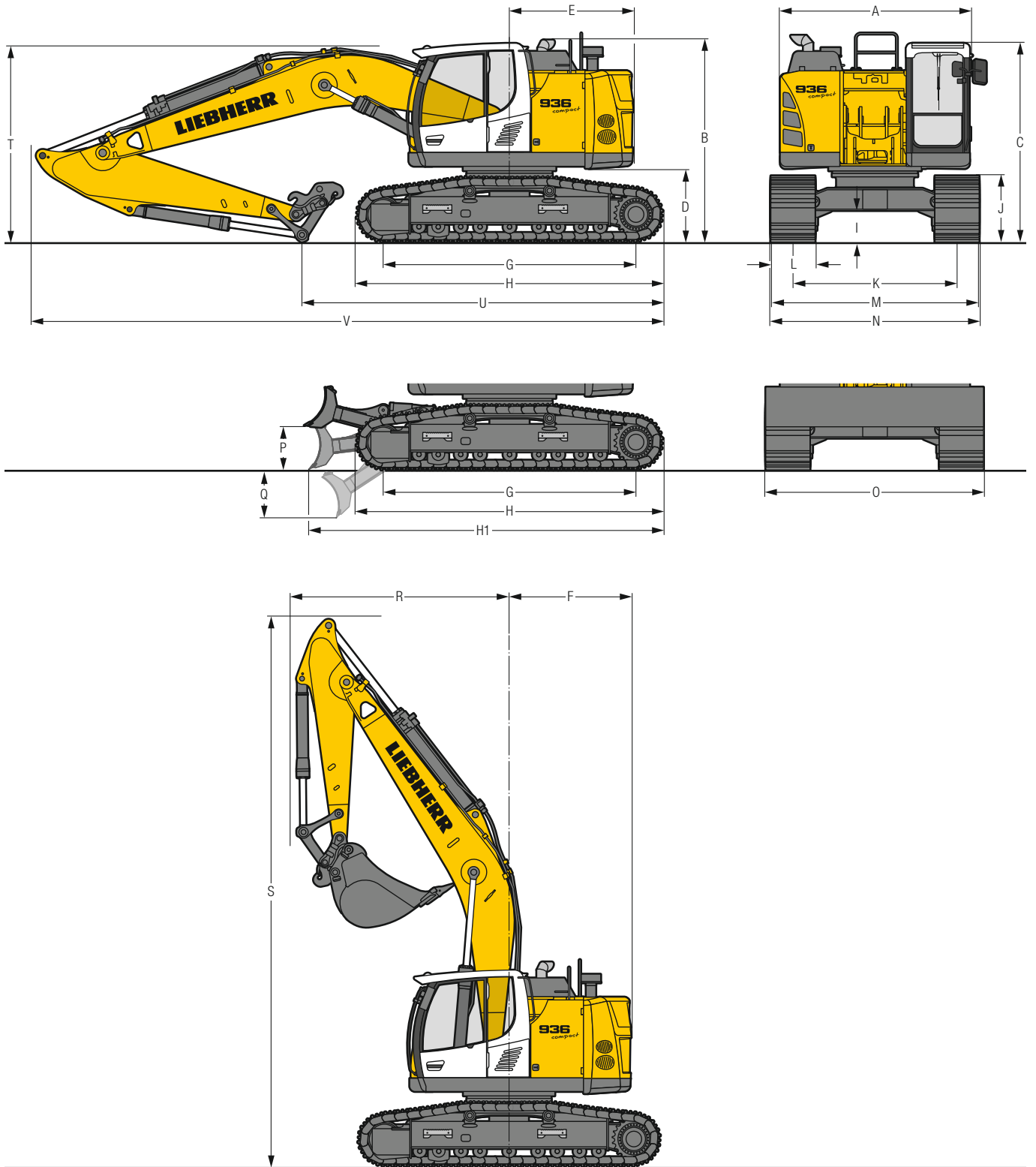
Equipment

| | |
|----------------------------|---|
| Hydraulic cylinders | Liebherr cylinders with seal and guidance systems |
| Bearings | Sealed, low maintenance |
| Lubrication | Liebherr central lubrication system |

* Valid for standard machine without operator's cab elevation and without height adjustable cab

** For the risk assessment according to 2002/44/EC see ISO/TR 25398:2006

Dimensions



| | NLC | | | | NLC with blade | | | | SLC | | | | LC | | | | LC with blade | | | |
|-----------|---------------------------------|--|--|--|----------------|--|--|--|-------|--|--|--|--------|--|--|--|---------------|--|--|--|
| | mm | | | | mm | | | | mm | | | | mm | | | | mm | | | |
| A | Upper-carriage width | | | | | | | | | | | | | | | | 3,000** | | | |
| B | Upper-carriage height | | | | | | | | | | | | | | | | 3,200 | | | |
| C | Cab height | | | | | | | | | | | | | | | | 3,155 | | | |
| D | Counterweight ground clearance | | | | | | | | | | | | | | | | 1,160 | | | |
| E | Rear-end length | | | | | | | | | | | | | | | | 1,975 | | | |
| F | Tail swing radius | | | | | | | | | | | | | | | | 1,975 | | | |
| G | Wheelbase | | | | | | | | | | | | | | | | 3,990 | | | |
| H | Undercarriage length | | | | | | | | | | | | | | | | 4,845 | | | |
| H1 | Undercarriage length with blade | | | | | | | | | | | | | | | | 5,600 | | | |
| I | Undercarriage ground clearance | | | | | | | | | | | | | | | | 500 | | | |
| J | Track height | | | | | | | | | | | | | | | | 1,055 | | | |
| K | Track gauge | | | | | | | | | | | | | | | | 2,390 | | | |
| L | Track pad width | | | | 600 | | | | 700 | | | | 800 | | | | 900 | | | |
| M | Width over tracks | | | | 2,990 | | | | 3,090 | | | | 3,190 | | | | 3,290 | | | |
| N | Width over steps | | | | 2,990 | | | | 2,990 | | | | 3,190* | | | | 3,190* | | | |
| O | Blade width | | | | | | | | | | | | | | | | 3,000 | | | |
| P | Max. blade height | | | | | | | | | | | | | | | | 705 | | | |
| Q | Max. blade depth | | | | | | | | | | | | | | | | 755 | | | |

* width with removable steps

** without door stop device and spacer

| | Stick length m | Mono boom 6.20 m with quick coupler mm | | | | Two-piece boom 6.40 m with quick coupler mm | | | | |
|----------|---------------------|--|----------------|--|--|---|----------------|--|--|--|
| R | Front swing radius | 2.50 | 3,500 | | | | 2,850 | | | |
| | | 3.20 | 3,500 | | | | 2,900 | | | |
| | | 3.70 | 3,500 | | | | 2,900 | | | |
| S | Height with boom up | 8,800 | | | | 9,400 | | | | |
| T | Boom height | 2.50 | 2,950 | | | | 2,950 | | | |
| | | 3.20 | 3,100 | | | | 3,050 | | | |
| | | 3.70 | 3,150 | | | | 3,200 | | | |
| U | Length on ground | 2.50 | 6,300 | | | | 6,600 | | | |
| | | 3.20 | 5,700 | | | | 6,050 | | | |
| | | 3.70 | 5,300 | | | | 5,650 | | | |
| V | Overall length | 2.50 | 10,000/10,800* | | | | 10,150/10,950* | | | |
| | | 3.20 | 10,000/10,800* | | | | 10,150/10,950* | | | |
| | | 3.70 | 10,000/10,800* | | | | 10,150/10,950* | | | |
| | Bucket | 1.45 m ³ | | | | 1.45 m ³ | | | | |

* with blade

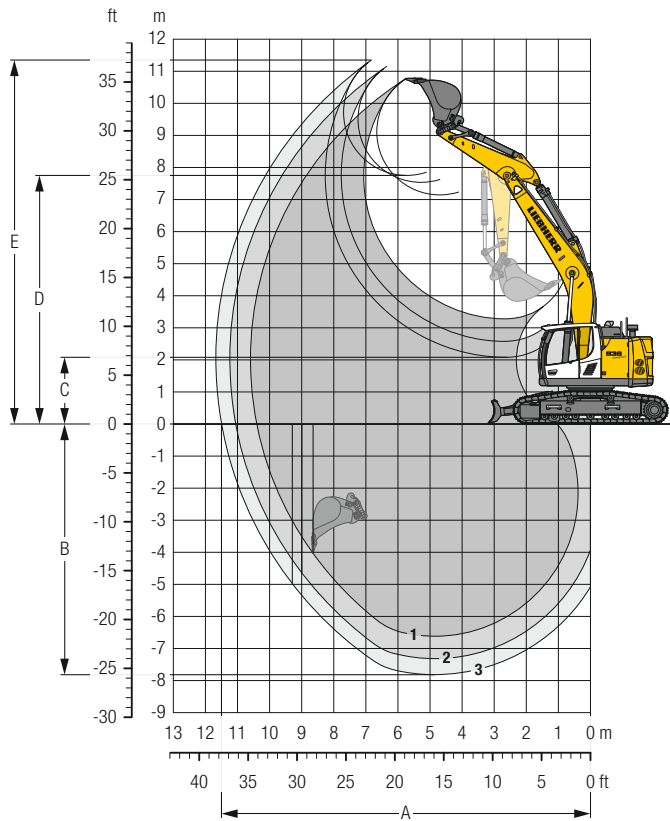
Transport Dimensions

removable elements disassembled

| | Undercarriage / Stick m | Mono boom 6.20 m | | | | | Two-piece boom 6.40 m | | | | |
|------------------|-------------------------|------------------|-----------------------|------------|-----------|----------------------|-----------------------|-----------------------|------------|-----------|----------------------|
| | | mm | | | | | mm | | | | |
| Pad width | | 600 | 700 | 800 | 900 | 600 | 700 | 800 | 900 | | |
| Transport width | NLC | 3,000 | 3,090 | 3,190 | 3,290 | 3,000 | 3,090 | 3,190 | 3,290 | | |
| | NLC with blade | 3,000 | – | – | – | 3,000 | – | – | – | | |
| | SLC | 3,190 | 3,290 | 3,390 | 3,490 | 3,190 | 3,290 | 3,390 | 3,490 | | |
| | LC | 3,340 | 3,440 | 3,540 | 3,640 | 3,340 | 3,440 | 3,540 | 3,640 | | |
| | LC with blade | 3,340 | – | – | – | 3,340 | – | – | – | | |
| Transport length | | NLC | NLC with blade | SLC | LC | LC with blade | NLC | NLC with blade | SLC | LC | LC with blade |
| | 2,50 | 10,000 | 10,800 | 10,000 | 10,000 | 10,800 | 10,150 | 10,950 | 10,150 | 10,150 | 10,950 |
| | 3,20 | 10,000 | 10,800 | 10,000 | 10,000 | 10,800 | 10,150 | 10,950 | 10,150 | 10,150 | 10,950 |
| | 3,70 | 10,000 | 10,800 | 10,000 | 10,000 | 10,800 | 10,150 | 10,950 | 10,150 | 10,150 | 10,950 |
| Transport height | 2,50 | 3,200 | | | | 3,200 | | | | | |
| | 3,20 | 3,200 | | | | 3,200 | | | | | |
| | 3,70 | 3,200 | | | | 3,200 | | | | | |

Backhoe Bucket

with Mono Boom 6.20 m and Counterweight 8.0 t



Digging Envelope

| with quick coupler | | 1 | 2 | 3 |
|------------------------------|---|-------|-------|-------|
| Stick length | m | 2.50 | 3.20 | 3.70 |
| A Max. reach at ground level | m | 10.40 | 11.06 | 11.50 |
| B Max. digging depth | m | 6.62 | 7.31 | 7.81 |
| C Min. dumping height | m | 3.28 | 2.58 | 2.08 |
| D Max. dumping height | m | 7.15 | 7.54 | 7.76 |
| E Max. cutting height | m | 10.76 | 11.15 | 11.35 |

Forces

| without quick coupler | | 1 | 2 | 3 |
|----------------------------------|----|-----|-----|-----|
| Stick digging force (ISO 6015) | kN | 168 | 142 | 128 |
| Bucket digging force (ISO 6015) | kN | 204 | 204 | 204 |
| Stick digging force (SAE J1179) | kN | 160 | 136 | 123 |
| Bucket digging force (SAE J1179) | kN | 178 | 178 | 178 |

Operating Weight and Ground Pressure

The operating weight includes the basic machine with counterweight 8.0 t, mono boom 6.20 m, stick 3.20 m, quick coupler SWA 66 and bucket 1.45 m³ (1,130 kg).

| Undercarriage | | NLC | | | |
|-----------------|--------------------|--------|--------|--------|--------|
| Pad width | mm | 600 | 700 | 800 | 900 |
| Weight | kg | 33,800 | 34,150 | 34,500 | 34,850 |
| Ground pressure | kg/cm ² | 0.66 | 0.57 | 0.50 | 0.45 |

| Undercarriage | | NLC with blade | | | |
|-----------------|--------------------|----------------|--------|--------|--------|
| Pad width | mm | 600 | 700 | 800 | 900 |
| Weight | kg | 36,150 | 36,500 | 36,850 | 37,200 |
| Ground pressure | kg/cm ² | 0.70 | 0.61 | 0.54 | 0.48 |

| Undercarriage | | SLC | | | |
|-----------------|--------------------|--------|--------|--------|--------|
| Pad width | mm | 600 | 700 | 800 | 900 |
| Weight | kg | 33,900 | 34,250 | 34,600 | 34,950 |
| Ground pressure | kg/cm ² | 0.66 | 0.57 | 0.50 | 0.45 |

| Undercarriage | | LC | | | |
|-----------------|--------------------|--------|--------|--------|--------|
| Pad width | mm | 600 | 700 | 800 | 900 |
| Weight | kg | 34,000 | 34,350 | 34,700 | 35,050 |
| Ground pressure | kg/cm ² | 0.66 | 0.57 | 0.50 | 0.45 |

| Undercarriage | | LC with blade | | | |
|-----------------|--------------------|---------------|--------|--------|--------|
| Pad width | mm | 600 | 700 | 800 | 900 |
| Weight | kg | 36,400 | 36,750 | 37,100 | 37,450 |
| Ground pressure | kg/cm ² | 0.70 | 0.61 | 0.54 | 0.48 |

Buckets Machine stability per ISO 10567* (75% of tipping capacity)

| | Cutting width mm | Capacity ISO 7451 m ³ | Weight ³⁾ kg | Weight ⁴⁾ kg | NLC-Undercarriage (with track pads 600 mm) | | | | | | | | | SLC-Undercarriage (with track pads 600 mm) | | | | | | | | | LC-Undercarriage (with track pads 600 mm) | | | | | | | | |
|-------------------|---------------------|--|----------------------------|----------------------------|---|------|------|--------------------|------|------|-----------------------|------|------|---|------|------|-----------------------|------|------|--------------------|------|---|--|--|--|--|--|--|--|--|--|
| | | | | | Stick length (m) | | | | | | | | | Stick length (m) | | | | | | | | | Stick length (m) | | | | | | | | |
| | | | | | without quick coupler | | | with quick coupler | | | without quick coupler | | | with quick coupler | | | without quick coupler | | | with quick coupler | | | | | | | | | | | |
| | 2.50 | 3.20 | 3.70 | 2.50 | 3.20 | 3.70 | 2.50 | 3.20 | 3.70 | 2.50 | 3.20 | 3.70 | 2.50 | 3.20 | 3.70 | 2.50 | 3.20 | 3.70 | 2.50 | 3.20 | 3.70 | | | | | | | | | | |
| STD ¹⁾ | 650 | 0.55 | 810 | 820 | ▲ | ▲ | ▲ | ▲ | ▲ | ▲ | ▲ | ▲ | ▲ | ▲ | ▲ | ▲ | ▲ | ▲ | ▲ | ▲ | ▲ | ▲ | | | | | | | | | |
| | 1,050 | 1.00 | 870 | 930 | ▲ | ▲ | ▲ | ▲ | ▲ | ▲ | ▲ | ▲ | ▲ | ▲ | ▲ | ▲ | ▲ | ▲ | ▲ | ▲ | ▲ | ▲ | | | | | | | | | |
| | 1,250 | 1.25 | 1,000 | 1,050 | ▲ | ▲ | ■ | ▲ | ■ | ▲ | ▲ | ▲ | ▲ | ▲ | ▲ | ▲ | ▲ | ▲ | ▲ | ▲ | ▲ | ▲ | | | | | | | | | |
| | 1,400 | 1.45 | 1,070 | 1,130 | ▲ | ■ | ▲ | ▲ | ▲ | △ | ▲ | ▲ | ■ | ▲ | ■ | ▲ | ▲ | ▲ | ▲ | ▲ | ▲ | ■ | | | | | | | | | |
| | 1,550 | 1.60 | 1,110 | 1,170 | ■ | ▲ | △ | ■ | △ | △ | ▲ | ■ | ▲ | ▲ | ▲ | ■ | ▲ | ▲ | ■ | ▲ | ▲ | ▲ | | | | | | | | | |
| | 1,650 | 1.75 | 1,160 | 1,220 | ▲ | △ | △ | ■ | △ | - | ▲ | ▲ | ■ | ■ | △ | ▲ | ■ | ▲ | ▲ | ▲ | ▲ | ■ | | | | | | | | | |
| | 1,550 | 1.85 | 1,170 | 1,230 | ▲ | △ | △ | ■ | △ | - | ■ | ■ | △ | ▲ | △ | △ | ▲ | ▲ | ■ | ■ | ■ | △ | | | | | | | | | |
| | 1,650 | 2.00 | 1,210 | 1,270 | ■ | △ | - | △ | - | - | ▲ | △ | △ | ■ | △ | △ | ■ | ■ | △ | ▲ | ■ | △ | | | | | | | | | |
| 1,750 | 2.15 | 1,260 | 1,320 | △ | - | - | △ | - | - | ■ | △ | △ | ■ | △ | - | ▲ | ■ | △ | ▲ | △ | △ | | | | | | | | | | |
| HD ²⁾ | 650 | 0.55 | 940 | 960 | ▲ | ▲ | ▲ | ▲ | ▲ | ▲ | ▲ | ▲ | ▲ | ▲ | ▲ | ▲ | ▲ | ▲ | ▲ | ▲ | ▲ | ▲ | | | | | | | | | |
| | 1,050 | 1.00 | 1,000 | 1,050 | ▲ | ▲ | ▲ | ▲ | ▲ | ▲ | ▲ | ▲ | ▲ | ▲ | ▲ | ▲ | ▲ | ▲ | ▲ | ▲ | ▲ | ▲ | | | | | | | | | |
| | 1,250 | 1.25 | 1,140 | 1,200 | ▲ | ▲ | ■ | ▲ | ■ | ▲ | ▲ | ▲ | ▲ | ▲ | ▲ | ▲ | ▲ | ▲ | ▲ | ▲ | ▲ | ▲ | | | | | | | | | |
| | 1,400 | 1.45 | 1,230 | 1,290 | ▲ | ▲ | ■ | ■ | ■ | △ | ▲ | ▲ | ■ | ▲ | ■ | ■ | ▲ | ▲ | ■ | ▲ | ▲ | ■ | | | | | | | | | |
| | 1,550 | 1.60 | 1,290 | 1,350 | ■ | ■ | △ | ▲ | △ | △ | ▲ | ■ | ■ | ■ | ▲ | △ | ▲ | ■ | ▲ | ■ | ■ | ■ | | | | | | | | | |
| | 1,650 | 1.75 | 1,350 | 1,410 | ▲ | △ | △ | ■ | △ | - | ■ | ■ | △ | ■ | △ | △ | ▲ | ▲ | ■ | ■ | ▲ | △ | | | | | | | | | |
| | 1,550 | 1.85 | 1,340 | 1,400 | ■ | △ | - | △ | △ | - | ■ | ■ | △ | ▲ | △ | △ | ▲ | ▲ | ■ | ■ | ■ | △ | | | | | | | | | |
| | 1,650 | 2.00 | 1,400 | 1,460 | △ | △ | - | △ | - | - | ▲ | △ | △ | ■ | △ | - | ■ | ■ | △ | ▲ | △ | △ | | | | | | | | | |
| 1,750 | 2.15 | 1,450 | 1,510 | △ | - | - | △ | - | - | ■ | △ | - | △ | - | - | ▲ | △ | △ | ■ | △ | - | | | | | | | | | | |

* Indicated loads are based on ISO 10567, at maximum reach, and may be swung 360° on firm and even ground

¹⁾ Standard bucket with teeth Z 50

²⁾ HD bucket with teeth Z 50

³⁾ Bucket for direct mounting

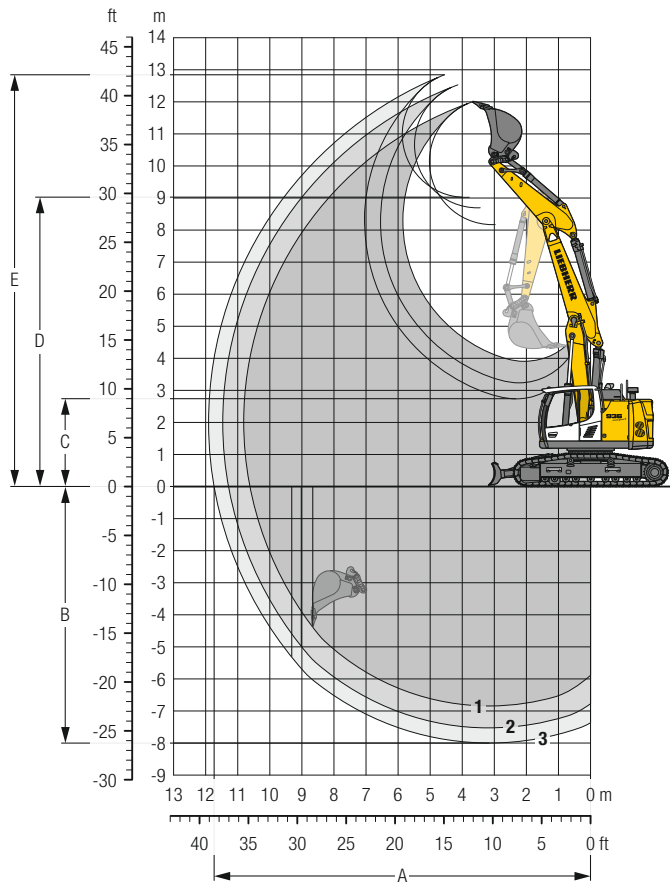
⁴⁾ Bucket for mounting to quick coupler

Other buckets available upon request

Max. material weight ▲ = ≤ 2.0 t/m³, ■ = ≤ 1.8 t/m³, ▲ = ≤ 1.65 t/m³, ■ = ≤ 1.5 t/m³, △ = ≤ 1.2 t/m³, - = not authorised

Backhoe Bucket

with Two-Piece Boom 6.40 m and Counterweight 8.0 t



Digging Envelope

| with quick coupler | | 1 | 2 | 3 |
|------------------------------|---|-------|-------|-------|
| Stick length | m | 2.50 | 3.20 | 3.70 |
| A Max. reach at ground level | m | 10.62 | 11.29 | 11.74 |
| B Max. digging depth | m | 6.84 | 7.52 | 8.00 |
| C Min. dumping height | m | 3.91 | 3.23 | 2.74 |
| D Max. dumping height | m | 8.17 | 8.70 | 9.02 |
| E Max. cutting height | m | 12.00 | 12.53 | 12.84 |

Forces

| without quick coupler | | 1 | 2 | 3 |
|----------------------------------|----|-----|-----|-----|
| Stick digging force (ISO 6015) | kN | 168 | 142 | 128 |
| Bucket digging force (ISO 6015) | kN | 204 | 204 | 204 |
| Stick digging force (SAE J1179) | kN | 160 | 136 | 123 |
| Bucket digging force (SAE J1179) | kN | 178 | 178 | 178 |

Operating Weight and Ground Pressure

The operating weight includes the basic machine with counterweight 8.0 t, two-piece boom 6.40 m, stick 3.20 m, quick coupler SWA 66 and bucket 1.45 m³ (1,130 kg).

| Undercarriage | | NLC | | | |
|-----------------|--------------------|--------|--------|--------|--------|
| Pad width | mm | 600 | 700 | 800 | 900 |
| Weight | kg | 34.600 | 34.950 | 35.300 | 35.650 |
| Ground pressure | kg/cm ² | 0,67 | 0,58 | 0,52 | 0,46 |

| Undercarriage | | NLC with blade | | | |
|-----------------|--------------------|----------------|--------|--------|--------|
| Pad width | mm | 600 | 700 | 800 | 900 |
| Weight | kg | 36.950 | 37.300 | 37.650 | 38.000 |
| Ground pressure | kg/cm ² | 0,72 | 0,62 | 0,55 | 0,49 |

| Undercarriage | | SLC | | | |
|-----------------|--------------------|--------|--------|--------|--------|
| Pad width | mm | 600 | 700 | 800 | 900 |
| Weight | kg | 34.700 | 35.050 | 35.400 | 35.750 |
| Ground pressure | kg/cm ² | 0,67 | 0,58 | 0,52 | 0,46 |

| Undercarriage | | LC | | | |
|-----------------|--------------------|--------|--------|--------|--------|
| Pad width | mm | 600 | 700 | 800 | 900 |
| Weight | kg | 34.800 | 35.150 | 35.500 | 35.850 |
| Ground pressure | kg/cm ² | 0,67 | 0,58 | 0,52 | 0,46 |

| Undercarriage | | LC with blade | | | |
|-----------------|--------------------|---------------|--------|--------|--------|
| Pad width | mm | 600 | 700 | 800 | 900 |
| Weight | kg | 37.200 | 37.550 | 37.900 | 38.250 |
| Ground pressure | kg/cm ² | 0,72 | 0,62 | 0,55 | 0,49 |

Buckets Machine stability per ISO 10567* (75% of tipping capacity)

| | Cutting width mm | Capacity ISO 7451 m ³ | Weight ³⁾ kg | Weight ⁴⁾ kg | NLC-Undercarriage (with track pads 600 mm) | | | | | | | | | SLC-Undercarriage (with track pads 600 mm) | | | | | | | | | LC-Undercarriage (with track pads 600 mm) | | | | | | | | |
|-------------------|---------------------|--|----------------------------|----------------------------|---|------|------|--------------------|------|------|-----------------------|------|------|---|------|------|-----------------------|------|------|--------------------|------|---|--|--|--|--------------------|--|--|--|--|--|
| | | | | | Stick length (m) | | | | | | | | | Stick length (m) | | | | | | | | | Stick length (m) | | | | | | | | |
| | | | | | without quick coupler | | | with quick coupler | | | without quick coupler | | | with quick coupler | | | without quick coupler | | | with quick coupler | | | without quick coupler | | | with quick coupler | | | | | |
| | 2.50 | 3.20 | 3.70 | 2.50 | 3.20 | 3.70 | 2.50 | 3.20 | 3.70 | 2.50 | 3.20 | 3.70 | 2.50 | 3.20 | 3.70 | 2.50 | 3.20 | 3.70 | 2.50 | 3.20 | 3.70 | | | | | | | | | | |
| STD ¹⁾ | 650 | 0.55 | 810 | 820 | ▲ | ▲ | ▲ | ▲ | ▲ | ▲ | ▲ | ▲ | ▲ | ▲ | ▲ | ▲ | ▲ | ▲ | ▲ | ▲ | ▲ | ▲ | | | | | | | | | |
| | 1,050 | 1.00 | 870 | 930 | ▲ | ▲ | ▲ | ▲ | ▲ | ▲ | ▲ | ▲ | ▲ | ▲ | ▲ | ▲ | ▲ | ▲ | ▲ | ▲ | ▲ | ▲ | | | | | | | | | |
| | 1,250 | 1.25 | 1,000 | 1,050 | ▲ | ■ | ▲ | ▲ | ▲ | ■ | ▲ | ▲ | ▲ | ▲ | ▲ | ■ | ▲ | ▲ | ▲ | ▲ | ▲ | ▲ | | | | | | | | | |
| | 1,400 | 1.45 | 1,070 | 1,130 | ■ | ▲ | △ | ■ | △ | △ | ▲ | ■ | ▲ | ▲ | ■ | ▲ | ▲ | ■ | ▲ | ■ | ▲ | ▲ | | | | | | | | | |
| | 1,550 | 1.60 | 1,110 | 1,170 | ▲ | ■ | △ | ■ | △ | - | ▲ | ▲ | ■ | ■ | △ | ▲ | ▲ | ■ | ▲ | ▲ | ▲ | ■ | | | | | | | | | |
| | 1,650 | 1.75 | 1,160 | 1,220 | ■ | △ | △ | △ | △ | - | ■ | ■ | △ | ▲ | △ | △ | ▲ | ▲ | ■ | ■ | ■ | △ | | | | | | | | | |
| | 1,550 | 1.85 | 1,170 | 1,230 | ■ | △ | - | △ | - | - | ▲ | △ | △ | ■ | △ | - | ■ | ■ | △ | ▲ | ■ | △ | | | | | | | | | |
| | 1,650 | 2.00 | 1,210 | 1,270 | △ | - | - | △ | - | - | ■ | △ | △ | △ | △ | - | ▲ | ■ | △ | ▲ | ■ | △ | | | | | | | | | |
| 1,750 | 2.15 | 1,260 | 1,320 | △ | - | - | - | - | - | △ | △ | - | △ | - | - | ▲ | △ | △ | ▲ | △ | - | | | | | | | | | | |
| HD ²⁾ | 650 | 0.55 | 940 | 960 | ▲ | ▲ | ▲ | ▲ | ▲ | ▲ | ▲ | ▲ | ▲ | ▲ | ▲ | ▲ | ▲ | ▲ | ▲ | ▲ | ▲ | ▲ | | | | | | | | | |
| | 1,050 | 1.00 | 1,000 | 1,050 | ▲ | ▲ | ▲ | ▲ | ▲ | ■ | ▲ | ▲ | ▲ | ▲ | ▲ | ▲ | ▲ | ▲ | ▲ | ▲ | ▲ | ▲ | | | | | | | | | |
| | 1,250 | 1.25 | 1,140 | 1,200 | ▲ | ■ | ▲ | ▲ | ▲ | △ | ▲ | ▲ | ■ | ▲ | ■ | ▲ | ▲ | ▲ | ▲ | ▲ | ▲ | ■ | | | | | | | | | |
| | 1,400 | 1.45 | 1,230 | 1,290 | ■ | ■ | △ | ▲ | △ | △ | ▲ | ■ | ▲ | ▲ | ▲ | △ | ▲ | ▲ | ■ | ▲ | ■ | ▲ | | | | | | | | | |
| | 1,550 | 1.60 | 1,290 | 1,350 | ▲ | △ | △ | ■ | △ | - | ■ | ■ | △ | ■ | △ | △ | ▲ | ■ | ■ | ▲ | ▲ | △ | | | | | | | | | |
| | 1,650 | 1.75 | 1,350 | 1,410 | ■ | △ | - | △ | - | - | ▲ | △ | △ | ■ | △ | - | ■ | ■ | △ | ▲ | ■ | △ | | | | | | | | | |
| | 1,550 | 1.85 | 1,340 | 1,400 | △ | △ | - | △ | - | - | ▲ | △ | △ | ■ | △ | - | ■ | ■ | △ | ▲ | △ | △ | | | | | | | | | |
| | 1,650 | 2.00 | 1,400 | 1,460 | △ | - | - | △ | - | - | ■ | △ | - | △ | - | - | ▲ | △ | △ | ■ | △ | - | | | | | | | | | |
| 1,750 | 2.15 | 1,450 | 1,510 | △ | - | - | - | - | - | △ | - | - | △ | - | - | ■ | △ | - | △ | △ | - | | | | | | | | | | |

* Indicated loads are based on ISO 10567, at maximum reach, and may be swung 360° on firm and even ground

¹⁾ Standard bucket with teeth Z 50

²⁾ HD bucket with teeth Z 50

³⁾ Bucket for direct mounting

⁴⁾ Bucket for mounting to quick coupler

Other buckets available upon request

Max. material weight ▲ = ≤ 2.0 t/m³, ■ = ≤ 1.8 t/m³, ▲ = ≤ 1.65 t/m³, ■ = ≤ 1.5 t/m³, △ = ≤ 1.2 t/m³, - = not authorised

Lift Capacities

with Mono Boom 6.20 m, Counterweight 8.0 t and Track Pads 600 mm

Stick 2.50 m

| Under-carriage m | 3.0 m | | 4.5 m | | 6.0 m | | 7.5 m | | 9.0 m | | m |
|---------------------|-------|-------|-------|---|-------|---|-------|---|-------|---|------|
| | ↕ | ↔ | ↕ | ↔ | ↕ | ↔ | ↕ | ↔ | ↕ | ↔ | |
| 9.0 | | | | | | | | | | | 9.6* |
| 7.5 | | | | | | | | | | | 9.6* |
| 6.0 | | | | | | | | | | | 6.6 |
| 4.5 | | | | | | | | | | | 6.6 |
| 3.0 | | | | | | | | | | | 8.3 |
| 1.5 | | | | | | | | | | | 8.6 |
| 0 | | | | | | | | | | | 8.4 |
| -1.5 | 10.9* | 10.9* | | | | | | | | | 7.9 |
| -3.0 | 13.8* | 13.8* | | | | | | | | | 7.0 |
| -4.5 | | | | | | | | | | | 5.5 |
| 9.0 | | | | | | | | | | | 9.6* |
| 7.5 | | | | | | | | | | | 9.6* |
| 6.0 | | | | | | | | | | | 6.6 |
| 4.5 | | | | | | | | | | | 6.6 |
| 3.0 | | | | | | | | | | | 8.3 |
| 1.5 | | | | | | | | | | | 8.6 |
| 0 | | | | | | | | | | | 8.4 |
| -1.5 | 10.9* | 10.9* | | | | | | | | | 7.9 |
| -3.0 | 13.8* | 13.8* | | | | | | | | | 7.0 |
| -4.5 | | | | | | | | | | | 5.5 |
| 9.0 | | | | | | | | | | | 9.6* |
| 7.5 | | | | | | | | | | | 9.6* |
| 6.0 | | | | | | | | | | | 6.6 |
| 4.5 | | | | | | | | | | | 6.6 |
| 3.0 | | | | | | | | | | | 8.3 |
| 1.5 | | | | | | | | | | | 8.6 |
| 0 | | | | | | | | | | | 8.4 |
| -1.5 | 10.9* | 10.9* | | | | | | | | | 7.9 |
| -3.0 | 13.8* | 13.8* | | | | | | | | | 7.0 |
| -4.5 | | | | | | | | | | | 5.5 |
| 9.0 | | | | | | | | | | | 9.6* |
| 7.5 | | | | | | | | | | | 9.6* |
| 6.0 | | | | | | | | | | | 6.6 |
| 4.5 | | | | | | | | | | | 6.6 |
| 3.0 | | | | | | | | | | | 8.3 |
| 1.5 | | | | | | | | | | | 8.6 |
| 0 | | | | | | | | | | | 8.4 |
| -1.5 | 10.9* | 10.9* | | | | | | | | | 7.9 |
| -3.0 | 13.8* | 13.8* | | | | | | | | | 7.0 |
| -4.5 | | | | | | | | | | | 5.5 |
| 9.0 | | | | | | | | | | | 9.6* |
| 7.5 | | | | | | | | | | | 9.6* |
| 6.0 | | | | | | | | | | | 6.6 |
| 4.5 | | | | | | | | | | | 6.6 |
| 3.0 | | | | | | | | | | | 8.3 |
| 1.5 | | | | | | | | | | | 8.6 |
| 0 | | | | | | | | | | | 8.4 |
| -1.5 | 10.9* | 10.9* | | | | | | | | | 7.9 |
| -3.0 | 13.8* | 13.8* | | | | | | | | | 7.0 |
| -4.5 | | | | | | | | | | | 5.5 |

Stick 3.20 m

| Under-carriage m | 3.0 m | | 4.5 m | | 6.0 m | | 7.5 m | | 9.0 m | | m |
|---------------------|-------|-------|-------|---|-------|---|-------|---|-------|---|------|
| | ↕ | ↔ | ↕ | ↔ | ↕ | ↔ | ↕ | ↔ | ↕ | ↔ | |
| 9.0 | | | | | | | | | | | 7.0* |
| 7.5 | | | | | | | | | | | 7.0* |
| 6.0 | | | | | | | | | | | 6.0 |
| 4.5 | | | | | | | | | | | 6.3* |
| 3.0 | | | | | | | | | | | 6.1* |
| 1.5 | | | | | | | | | | | 6.1* |
| 0 | | | | | | | | | | | 6.1* |
| -1.5 | 10.4* | 10.4* | | | | | | | | | 5.7 |
| -3.0 | 16.4* | 17.1* | | | | | | | | | 5.7 |
| -4.5 | 11.9* | 11.9* | | | | | | | | | 5.8 |
| 9.0 | | | | | | | | | | | 7.0* |
| 7.5 | | | | | | | | | | | 7.0* |
| 6.0 | | | | | | | | | | | 6.0 |
| 4.5 | | | | | | | | | | | 6.3* |
| 3.0 | | | | | | | | | | | 6.1* |
| 1.5 | | | | | | | | | | | 6.1* |
| 0 | | | | | | | | | | | 6.1* |
| -1.5 | 10.4* | 10.4* | | | | | | | | | 5.7 |
| -3.0 | 17.1* | 17.1* | | | | | | | | | 5.7 |
| -4.5 | 11.9* | 11.9* | | | | | | | | | 5.8 |
| 9.0 | | | | | | | | | | | 7.0* |
| 7.5 | | | | | | | | | | | 7.0* |
| 6.0 | | | | | | | | | | | 6.0 |
| 4.5 | | | | | | | | | | | 6.3* |
| 3.0 | | | | | | | | | | | 6.1* |
| 1.5 | | | | | | | | | | | 6.1* |
| 0 | | | | | | | | | | | 6.1* |
| -1.5 | 10.4* | 10.4* | | | | | | | | | 5.7 |
| -3.0 | 17.1* | 17.1* | | | | | | | | | 5.7 |
| -4.5 | 11.9* | 11.9* | | | | | | | | | 5.8 |
| 9.0 | | | | | | | | | | | 7.0* |
| 7.5 | | | | | | | | | | | 7.0* |
| 6.0 | | | | | | | | | | | 6.0 |
| 4.5 | | | | | | | | | | | 6.3* |
| 3.0 | | | | | | | | | | | 6.1* |
| 1.5 | | | | | | | | | | | 6.1* |
| 0 | | | | | | | | | | | 6.1* |
| -1.5 | 10.4* | 10.4* | | | | | | | | | 5.7 |
| -3.0 | 17.1* | 17.1* | | | | | | | | | 5.7 |
| -4.5 | 11.9* | 11.9* | | | | | | | | | 5.8 |

↕ Height ↔ Can be slewed through 360° In longitudinal position of undercarriage Max. reach * Limited by hydr. capacity

The load values are quoted in tons (t) at stick end (without bucket), and may be swung 360° on firm and even ground. Adjacent values are valid for the undercarriage when in the longitudinal position. Capacities are valid for 600 mm wide track pads. Indicated loads are based on ISO 10567 standard and do not exceed 75% of tipping or 87% of hydraulic capacity (indicated via *). Without bucket cylinder, link and lever the lift capacities will increase by 410 kg. Lifting capacity of the excavator is limited by machine stability and hydraulic capacity.

According to European Standard, EN 474-5: In the European Union excavators have to be equipped with an overload warning device, a load diagram and automatic safety check valves on hoist cylinders and stick cylinder(s), when they are used for lifting operations which require the use of lifting accessories.

Stick 3.70 m

| Under-carriage | 3.0 m | | 4.5 m | | 6.0 m | | 7.5 m | | 9.0 m | | m | | | | | |
|----------------|-------|-------|-------|-------|-------|------|-------|------|-------|------|------|------|------|-----|------|-----|
| | m | Icon | m | Icon | m | Icon | m | Icon | m | Icon | | | | | | |
| MLC | 9.0 | | | | | | 5.0 | 6.5* | | | 5.8* | 5.8* | 6.6 | | | |
| | 7.5 | | | | | | | | | | 4.5 | 5.3* | 8.0 | | | |
| | 6.0 | | | | | 7.1 | 7.7* | 4.9 | 7.5* | | 3.7 | 5.1* | 8.8 | | | |
| | 4.5 | | | 10.0* | 10.0* | 6.8 | 9.4* | 4.7 | 8.2* | 3.5 | 6.1 | 3.2 | 5.2* | 9.4 | | |
| | 3.0 | | | | | 9.6 | 14.1* | 6.3 | 10.6* | 4.5 | 8.0 | 3.4 | 6.0 | 3.0 | 5.3 | 9.7 |
| | 1.5 | | | | | 8.7 | 16.2* | 5.8 | 10.8 | 4.3 | 7.7 | 3.2 | 5.8 | 2.9 | 5.2 | 9.7 |
| | 0 | 6.1* | 6.1* | 8.3 | 16.8* | 5.5 | 10.5 | 4.1 | 7.5 | 3.1 | 5.7 | 2.9 | 5.3 | 9.5 | | |
| MLC Blade up | -1.5 | 10.1* | 10.1* | 8.1 | 16.1* | 5.4 | 10.3 | 4.0 | 7.4 | 3.1 | 5.7 | 3.1 | 5.7 | 9.0 | | |
| | -3.0 | 15.4* | 15.4* | 8.2 | 14.3* | 5.4 | 10.3 | 4.0 | 7.4 | | | 3.5 | 6.5 | 8.3 | | |
| | -4.5 | 14.5* | 14.5* | 8.4 | 11.3* | 5.5 | 8.6* | | | | | 4.5 | 6.5* | 7.1 | | |
| | 9.0 | | | | | | | 5.4 | 6.5* | | | 5.8* | 5.8* | 6.6 | | |
| | 7.5 | | | | | | | | | | | 4.8 | 5.3* | 8.0 | | |
| MLC Blade down | 6.0 | | | | 7.6 | 7.7* | 5.3 | 7.5* | | | 4.0 | 5.1* | 8.8 | | | |
| | 4.5 | | | 10.0* | 10.0* | 7.3 | 9.4* | 5.1 | 8.2* | 3.8 | 6.2 | 3.5 | 5.2* | 9.4 | | |
| | 3.0 | | | | | 10.3 | 14.1* | 6.8 | 10.6* | 4.9 | 8.0 | 3.7 | 6.0 | 3.3 | 5.3* | 9.7 |
| | 1.5 | | | | | 9.4 | 16.2* | 6.3 | 10.9 | 4.6 | 7.7 | 3.5 | 5.9 | 3.2 | 5.3 | 9.7 |
| | 0 | 6.1* | 6.1* | 9.0 | 16.8* | 6.0 | 10.6 | 4.4 | 7.5 | 3.4 | 5.8 | 3.2 | 5.4 | 9.5 | | |
| MLC | -1.5 | 10.1* | 10.1* | 8.8 | 16.1* | 5.9 | 10.4 | 4.3 | 7.4 | 3.4 | 5.7 | 3.4 | 5.7 | 9.0 | | |
| | -3.0 | 15.4* | 15.4* | 8.9 | 14.3* | 5.9 | 10.4 | 4.4 | 7.4 | | | 3.9 | 6.5 | 8.3 | | |
| | -4.5 | 14.5* | 14.5* | 9.1 | 11.3* | 6.0 | 8.6* | | | | | 4.8 | 6.5* | 7.1 | | |
| | 9.0 | | | | | | | 5.6 | 6.5* | | | 5.8* | 5.8* | 6.6 | | |
| | 7.5 | | | | | | | | | | | 5.0 | 5.3* | 8.0 | | |
| MLC | 6.0 | | | | 7.7* | 7.7* | 5.5 | 7.5* | | | 4.2 | 5.1* | 8.8 | | | |
| | 4.5 | | | 10.0* | 10.0* | 7.6 | 9.4* | 5.3 | 8.2* | 4.0 | 6.6* | 3.7 | 5.2* | 9.4 | | |
| | 3.0 | | | | | 10.9 | 14.1* | 7.1 | 10.6* | 5.1 | 8.8* | 3.8 | 7.7* | 3.4 | 5.3* | 9.7 |
| | 1.5 | | | | | 10.0 | 16.2* | 6.7 | 11.7* | 4.9 | 9.4* | 3.7 | 7.9* | 3.3 | 5.7* | 9.7 |
| | 0 | 6.1* | 6.1* | 9.5 | 16.8* | 6.3 | 12.3* | 4.7 | 9.6* | 3.6 | 7.8* | 3.4 | 6.3* | 9.5 | | |
| MLC | -1.5 | 10.1* | 10.1* | 9.3 | 16.1* | 6.2 | 12.0* | 4.6 | 9.4* | 3.6 | 7.3* | 3.6 | 7.2* | 9.0 | | |
| | -3.0 | 15.4* | 15.4* | 9.4 | 14.3* | 6.2 | 10.9* | 4.6 | 8.4* | | | 4.1 | 7.1* | 8.3 | | |
| | -4.5 | 14.5* | 14.5* | 9.6 | 11.3* | 6.3 | 8.6* | | | | | 5.1 | 6.5* | 7.1 | | |
| | 9.0 | | | | | | | 5.5 | 6.5* | | | 5.8* | 5.8* | 6.6 | | |
| | 7.5 | | | | | | | | | | | 4.9 | 5.3* | 8.0 | | |
| SLC | 6.0 | | | | 7.7* | 7.7* | 5.4 | 7.5* | | | 4.0 | 5.1* | 8.8 | | | |
| | 4.5 | | | 10.0* | 10.0* | 7.4 | 9.4* | 5.2 | 8.2* | 3.8 | 6.1 | 3.6 | 5.2* | 9.4 | | |
| | 3.0 | | | | | 10.7 | 14.1* | 7.0 | 10.6* | 5.0 | 8.0 | 3.7 | 6.0 | 3.3 | 5.3* | 9.7 |
| | 1.5 | | | | | 9.8 | 16.2* | 6.5 | 10.9 | 4.7 | 7.7 | 3.6 | 5.9 | 3.2 | 5.2 | 9.7 |
| | 0 | 6.1* | 6.1* | 9.3 | 16.8* | 6.2 | 10.5 | 4.5 | 7.5 | 3.5 | 5.7 | 3.3 | 5.3 | 9.5 | | |
| SLC | -1.5 | 10.1* | 10.1* | 9.1 | 16.1* | 6.0 | 10.3 | 4.4 | 7.4 | 3.5 | 5.7 | 3.5 | 5.7 | 9.0 | | |
| | -3.0 | 15.4* | 15.4* | 9.2 | 14.3* | 6.0 | 10.3 | 4.4 | 7.4 | | | 3.9 | 6.5 | 8.3 | | |
| | -4.5 | 14.5* | 14.5* | 9.4 | 11.3* | 6.2 | 8.6* | | | | | 5.0 | 6.5* | 7.1 | | |
| | 9.0 | | | | | | | 5.8 | 6.5* | | | 5.8* | 5.8* | 6.6 | | |
| | 7.5 | | | | | | | | | | | 5.2 | 5.3* | 8.0 | | |
| LC | 6.0 | | | | 7.7* | 7.7* | 5.8 | 7.5* | | | 4.3 | 5.1* | 8.8 | | | |
| | 4.5 | | | 10.0* | 10.0* | 8.0 | 9.4* | 5.6 | 8.2* | 4.1 | 6.1 | 3.8 | 5.2* | 9.4 | | |
| | 3.0 | | | | | 11.6 | 14.1* | 7.5 | 10.6* | 5.3 | 8.0 | 4.0 | 6.0 | 3.6 | 5.3* | 9.7 |
| | 1.5 | | | | | 10.6 | 16.2* | 7.0 | 10.9 | 5.1 | 7.7 | 3.9 | 5.9 | 3.5 | 5.2 | 9.7 |
| | 0 | 6.1* | 6.1* | 10.1 | 16.8* | 6.7 | 10.5 | 4.9 | 7.5 | 3.8 | 5.8 | 3.5 | 5.3 | 9.5 | | |
| LC | -1.5 | 10.1* | 10.1* | 10.0 | 16.1* | 6.5 | 10.4 | 4.8 | 7.4 | 3.8 | 5.7 | 3.7 | 5.7 | 9.0 | | |
| | -3.0 | 15.4* | 15.4* | 10.0 | 14.3* | 6.5 | 10.4 | 4.8 | 7.4 | | | 4.2 | 6.5 | 8.3 | | |
| | -4.5 | 14.5* | 14.5* | 10.3 | 11.3* | 6.7 | 8.6* | | | | | 5.3 | 6.5* | 7.1 | | |
| | 9.0 | | | | | | | 6.3 | 6.5* | | | 5.8* | 5.8* | 6.6 | | |
| | 7.5 | | | | | | | | | | | 5.3* | 5.3* | 8.0 | | |
| LC Blade up | 6.0 | | | | 7.7* | 7.7* | 6.2 | 7.5* | | | 4.7 | 5.1* | 8.8 | | | |
| | 4.5 | | | 10.0* | 10.0* | 8.5 | 9.4* | 6.0 | 8.2* | 4.5 | 6.2 | 4.2 | 5.2* | 9.4 | | |
| | 3.0 | | | | | 12.5 | 14.1* | 8.1 | 10.6* | 5.8 | 8.0 | 4.4 | 6.0 | 3.9 | 5.3* | 9.7 |
| | 1.5 | | | | | 11.5 | 16.2* | 7.6 | 10.9 | 5.5 | 7.8 | 4.2 | 5.9 | 3.8 | 5.3 | 9.7 |
| | 0 | 6.1* | 6.1* | 11.0 | 16.8* | 7.3 | 10.6 | 5.3 | 7.6 | 4.1 | 5.8 | 3.8 | 5.4 | 9.5 | | |
| LC Blade down | -1.5 | 10.1* | 10.1* | 10.8 | 16.1* | 7.1 | 10.4 | 5.2 | 7.4 | 4.1 | 5.8 | 4.1 | 5.7 | 9.0 | | |
| | -3.0 | 15.4* | 15.4* | 10.9 | 14.3* | 7.1 | 10.4 | 5.2 | 7.5 | | | 4.6 | 6.5 | 8.3 | | |
| | -4.5 | 14.5* | 14.5* | 11.2 | 11.3* | 7.3 | 8.6* | | | | | 5.8 | 6.5* | 7.1 | | |
| | 9.0 | | | | | | | 6.5* | 6.5* | | | 5.8* | 5.8* | 6.6 | | |
| | 7.5 | | | | | | | | | | | 5.3* | 5.3* | 8.0 | | |
| LC | 6.0 | | | | 7.7* | 7.7* | 6.4 | 7.5* | | | 4.9 | 5.1* | 8.8 | | | |
| | 4.5 | | | 10.0* | 10.0* | 8.9 | 9.4* | 6.3 | 8.2* | 4.7 | 6.6* | 4.3 | 5.2* | 9.4 | | |
| | 3.0 | | | | | 13.0 | 14.1* | 8.4 | 10.6* | 6.0 | 8.8* | 4.5 | 7.7* | 4.0 | 5.3* | 9.7 |
| | 1.5 | | | | | 12.1 | 16.2* | 7.9 | 11.7* | 5.7 | 9.4* | 4.4 | 7.9* | 3.9 | 5.7* | 9.7 |
| | 0 | 6.1* | 6.1* | 11.5 | 16.8* | 7.6 | 12.3* | 5.6 | 9.6* | 4.3 | 7.8* | 4.0 | 6.3* | 9.5 | | |
| LC | -1.5 | 10.1* | 10.1* | 11.4 | 16.1* | 7.4 | 12.0* | 5.5 | 9.4* | 4.3 | 7.3* | 4.3 | 7.2* | 9.0 | | |
| | -3.0 | 15.4* | 15.4* | 11.4 | 14.3* | 7.4 | 10.9* | 5.5 | 8.4* | | | 4.8 | 7.1* | 8.3 | | |
| | -4.5 | 14.5* | 14.5* | 11.3* | 11.3* | 7.6 | 8.6* | | | | | 6.1 | 6.5* | 7.1 | | |

Height
 Can be swung through 360°
 In longitudinal position of undercarriage
 Max. reach
 * Limited by hydr. capacity

The load values are quoted in tons (t) at stick end (without bucket), and may be swung 360° on firm and even ground. Adjacent values are valid for the undercarriage when in the longitudinal position. Capacities are valid for 600 mm wide track pads. Indicated loads are based on ISO 10567 standard and do not exceed 75% of tipping or 87% of hydraulic capacity (indicated via *). Without bucket cylinder, link and lever the lift capacities will increase by 410 kg. Lifting capacity of the excavator is limited by machine stability and hydraulic capacity.

According to European Standard, EN 474-5: In the European Union excavators have to be equipped with an overload warning device, a load diagram and automatic safety check valves on hoist cylinders and stick cylinder(s), when they are used for lifting operations which require the use of lifting accessories.

Lift Capacities

with Two-Piece Boom 6.40 m, Counterweight 8.0 t and Track Pads 600 mm

| Stick 2.50 m | | | | | | | | | | | | Stick 3.20 m | | | | | | | | | | | | | | | |
|----------------|-------|-------|-------|-------|-------|-------|-------|-------|------|-------|---|--------------|----------------|-----|-------|----|-------|---|-------|---|-------|---|-------|------|------|------|-----|
| Under-carriage | m | 3.0 m | | 4.5 m | | 6.0 m | | 7.5 m | | 9.0 m | | m | Under-carriage | m | 3.0 m | | 4.5 m | | 6.0 m | | 7.5 m | | 9.0 m | | m | | |
| | | ↕ | ↕ | ↕ | ↕ | ↕ | ↕ | ↕ | ↕ | ↕ | ↕ | | | | ↕ | ↕ | ↕ | ↕ | ↕ | ↕ | ↕ | ↕ | ↕ | ↕ | | ↕ | ↕ |
| MLC | 10.5 | | | | | | | | | | | 8.6 | 9.6* | 5.3 | | | | | | | | | | | 9.0* | 9.0* | 4.0 |
| | 9.0 | | | | | | | | | | | 5.5 | 8.5* | 6.9 | | | | | | | | | | | 6.5 | 7.0* | 6.3 |
| | 7.5 | | | | | | | | | | | 4.3 | 7.6 | 7.9 | | | | | | | | | | | 4.6 | 6.4* | 7.7 |
| | 6.0 | 12.8* | 12.8* | | | 7.3 | 11.0* | | | | | 3.7 | 6.6 | 8.5 | | | | | | | | | | 3.7 | 6.1* | 8.6 | |
| | 4.5 | 20.1* | 21.4* | 11.0 | 15.8* | 7.2 | 11.7 | 4.8 | 8.4 | | | 3.4 | 6.2 | 8.8 | | | | | | | | | 3.4 | 6.0 | 3.0 | 5.5 | 9.4 |
| | 3.0 | 18.0* | 18.0* | 10.3 | 16.9* | 6.7 | 11.5 | 4.7 | 8.2 | | | 3.3 | 6.0 | 8.8 | | | | | | | | | 3.2 | 5.9 | 2.9 | 5.4 | 9.5 |
| | 1.5 | 10.0* | 10.0* | 9.4 | 16.9* | 6.3 | 11.4 | 4.5 | 8.0 | | | 3.4 | 6.2 | 8.6 | | | | | | | | | 3.2 | 5.9 | 3.0 | 5.5 | 9.3 |
| | 0 | 16.5 | 17.1* | 8.8 | 17.0* | 6.0 | 11.0 | 4.3 | 7.7 | | | 3.7 | 6.1* | 8.1 | | | | | | | | | 3.7 | 4.8* | 8.0 | | |
| | -1.5 | 16.5 | 25.2* | 8.6 | 16.9* | 5.8 | 10.8 | 4.1 | 7.6 | | | 4.4 | 4.5* | 7.2 | | | | | | | | | 4.0* | 4.0* | 6.6 | | |
| | -3.0 | 16.7 | 22.4* | 8.7 | 15.5* | 5.7 | 10.2* | | | | | 5.7* | 5.7* | 5.1 | | | | | | | | | | | | | |
| -4.5 | 15.1* | 15.1* | 8.4* | 8.4* | | | | | | | | | | | | | | | | | | | | | | | |
| -6.0 | | | | | | | | | | | | | | | | | | | | | | | | | | | |
| MLC Blade up | 10.5 | | | | | | | | | | | 9.2 | 9.6* | 5.3 | | | | | | | | | | 9.0* | 9.0* | 4.0 | |
| | 9.0 | | | | | | | | | | | 5.9 | 8.5* | 6.9 | | | | | | | | | | 6.9 | 7.0* | 6.3 | |
| | 7.5 | | | | | | | | | | | 4.7 | 7.7 | 7.9 | | | | | | | | | | 5.0 | 6.4* | 7.7 | |
| | 6.0 | 12.8* | 12.8* | | | 7.9 | 11.3* | 5.2 | 8.4 | | | 4.1 | 6.7 | 8.5 | | | | | | | | | 4.1 | 6.1* | 8.6 | | |
| | 4.5 | 21.1* | 21.4* | 11.6 | 15.8* | 7.7 | 11.7 | 5.2 | 8.4 | | | 3.7 | 6.2 | 8.8 | | | | | | | | | 3.7 | 6.1* | 9.2 | | |
| | 3.0 | 18.0* | 18.0* | 11.0 | 16.9* | 7.2 | 11.5 | 5.0 | 8.3 | | | 3.6 | 6.1 | 8.8 | | | | | | | | | 3.6 | 6.1 | 3.3 | 5.5 | 9.4 |
| | 1.5 | 10.0* | 10.0* | 10.1 | 16.9* | 6.8 | 11.5 | 4.8 | 8.0 | | | 3.7 | 6.3 | 8.6 | | | | | | | | | 3.5 | 5.9 | 3.2 | 5.4 | 9.5 |
| | 0 | 17.1* | 17.1* | 9.5 | 17.0* | 6.4 | 11.1 | 4.6 | 7.8 | | | 4.1 | 6.1* | 8.1 | | | | | | | | | 4.0 | 4.8* | 8.0 | | |
| | -1.5 | 17.8 | 25.2* | 9.3 | 16.9* | 6.3 | 10.9 | 4.5 | 7.6 | | | 4.5* | 4.5* | 7.2 | | | | | | | | | 4.0* | 4.0* | 6.6 | | |
| | -3.0 | 18.1 | 22.4* | 9.4 | 15.5* | 6.1 | 10.2* | | | | | 5.7* | 5.7* | 5.1 | | | | | | | | | | | | | |
| -4.5 | 15.1* | 15.1* | 8.4* | 8.4* | | | | | | | | | | | | | | | | | | | | | | | |
| -6.0 | | | | | | | | | | | | | | | | | | | | | | | | | | | |
| MLC Blade down | 10.5 | | | | | | | | | | | 9.6* | 9.6* | 5.3 | | | | | | | | | | 9.0* | 9.0* | 4.0 | |
| | 9.0 | | | | | | | | | | | 6.2 | 8.5* | 6.9 | | | | | | | | | | 5.2 | 6.4* | 7.7 | |
| | 7.5 | | | | | | | | | | | 4.9 | 8.1* | 7.9 | | | | | | | | | | 4.3 | 6.1* | 8.6 | |
| | 6.0 | 12.8* | 12.8* | 12.3 | 13.3* | 8.1 | 11.3* | 5.4 | 9.6* | | | 4.3 | 8.1* | 8.5 | | | | | | | | | 3.9 | 7.1* | 3.7 | 6.1* | 9.2 |
| | 4.5 | 21.4* | 21.4* | 12.1 | 15.8* | 8.0 | 11.9* | 5.3 | 9.8* | | | 3.9 | 8.2* | 8.8 | | | | | | | | | 3.7 | 6.1* | 9.4 | | |
| | 3.0 | 18.0* | 18.0* | 11.6 | 16.9* | 7.6 | 12.4* | 4.9 | 9.8* | | | 3.8 | 7.6* | 8.8 | | | | | | | | | 3.6 | 5.9 | 3.4 | 6.7* | 9.5 |
| | 1.5 | 10.0* | 10.0* | 10.6 | 16.9* | 7.1 | 12.4* | 5.1 | 9.8* | | | 3.9 | 7.0* | 8.6 | | | | | | | | | 3.6 | 7.9* | 3.4 | 6.6* | 9.3 |
| | 0 | 17.1* | 17.1* | 9.9 | 17.0* | 6.8 | 12.4* | 4.9 | 9.8* | | | 4.3 | 6.1* | 8.1 | | | | | | | | | 4.2 | 4.8* | 8.0 | | |
| | -1.5 | 19.1 | 25.2* | 9.8 | 16.9* | 6.6 | 12.4* | 4.7 | 8.6* | | | 4.5* | 4.5* | 7.2 | | | | | | | | | 4.0* | 4.0* | 6.6 | | |
| | -3.0 | 19.3 | 22.4* | 9.9 | 15.5* | 6.5 | 10.2* | | | | | 5.7* | 5.7* | 5.1 | | | | | | | | | | | | | |
| -4.5 | 15.1* | 15.1* | 8.4* | 8.4* | | | | | | | | | | | | | | | | | | | | | | | |
| -6.0 | | | | | | | | | | | | | | | | | | | | | | | | | | | |
| SLC | 10.5 | | | | | | | | | | | 9.5 | 9.6* | 5.3 | | | | | | | | | | 9.0* | 9.0* | 4.0 | |
| | 9.0 | | | | | | | | | | | 6.1 | 8.5* | 6.9 | | | | | | | | | 5.1 | 6.4* | 7.7 | | |
| | 7.5 | | | | | | | | | | | 4.8 | 7.6 | 7.9 | | | | | | | | | 4.1 | 6.1* | 8.6 | | |
| | 6.0 | 12.8* | 12.8* | | | 8.0 | 11.0* | 5.3 | 8.4 | | | 4.1 | 6.7 | 8.5 | | | | | | | | | 3.8 | 6.1 | 3.6 | 5.9 | 9.2 |
| | 4.5 | 21.4* | 21.4* | 12.0 | 15.8* | 7.9 | 11.7 | 5.3 | 8.4 | | | 3.8 | 6.2 | 8.8 | | | | | | | | | 3.7 | 6.0 | 3.4 | 5.5 | 9.4 |
| | 3.0 | 18.0* | 18.0* | 11.4 | 16.9* | 7.4 | 11.5 | 5.2 | 8.2 | | | 3.7 | 6.1 | 8.8 | | | | | | | | | 3.6 | 5.9 | 3.3 | 5.4 | 9.5 |
| | 1.5 | 10.0* | 10.0* | 10.5 | 16.9* | 7.0 | 11.4 | 4.9 | 8.0 | | | 3.7 | 6.2 | 8.6 | | | | | | | | | 3.6 | 5.8 | 3.3 | 5.5 | 9.3 |
| | 0 | 17.1* | 17.1* | 9.9 | 17.0* | 6.6 | 11.1 | 4.7 | 7.8 | | | 4.1 | 6.1* | 8.1 | | | | | | | | | 4.1 | 4.8* | 8.0 | | |
| | -1.5 | 19.0 | 25.2* | 9.7 | 16.9* | 6.4 | 10.9 | 4.6 | 7.6 | | | 4.5* | 4.5* | 7.2 | | | | | | | | | 4.0* | 4.0* | 6.6 | | |
| | -3.0 | 19.3 | 22.4* | 9.7 | 15.5* | 6.3 | 10.2* | | | | | 5.7* | 5.7* | 5.1 | | | | | | | | | | | | | |
| -4.5 | 15.1* | 15.1* | 8.4* | 8.4* | | | | | | | | | | | | | | | | | | | | | | | |
| -6.0 | | | | | | | | | | | | | | | | | | | | | | | | | | | |
| LC | 10.5 | | | | | | | | | | | 9.6* | 9.6* | 5.3 | | | | | | | | | | 9.0* | 9.0* | 4.0 | |
| | 9.0 | | | | | | | | | | | 6.5 | 8.5* | 6.9 | | | | | | | | | 5.4 | 6.4* | 7.7 | | |
| | 7.5 | | | | | | | | | | | 5.1 | 7.6 | 7.9 | | | | | | | | | 4.4 | 6.1* | 8.6 | | |
| | 6.0 | 12.8* | 12.8* | 13.1 | 13.3* | 8.6 | 11.3* | 5.7 | 8.4 | | | 4.4 | 6.7 | 8.5 | | | | | | | | | 4.1 | 6.1 | 3.9 | 5.9 | 9.2 |
| | 4.5 | 21.4* | 21.4* | 12.7 | 15.8* | 8.4 | 11.7 | 5.7 | 8.4 | | | 4.1 | 6.2 | 8.8 | | | | | | | | | 4.0 | 6.0 | 3.6 | 5.5 | 9.4 |
| | 3.0 | 18.0* | 18.0* | 12.3 | 16.9* | 8.0 | 11.5 | 5.5 | 8.3 | | | 4.0 | 6.1 | 8.8 | | | | | | | | | 3.9 | 5.9 | 3.5 | 5.4 | 9.5 |
| | 1.5 | 10.0* | 10.0* | 11.3 | 16.9* | 7.5 | 11.5 | 5.3 | 8.0 | | | 4.0 | 6.1 | 8.8 | | | | | | | | | 3.8 | 5.8 | 3.6 | 5.5 | 9.3 |
| | 0 | 17.1* | 17.1* | 10.8 | 17.0* | 7.1 | 11.1 | 5.1 | 7.8 | | | 4.5 | 6.1* | 8.1 | | | | | | | | | 4.2 | 4.8* | 8.0 | | |
| | -1.5 | 21.2 | 25.2* | 10.5 | 16.9* | 7.0 | 10.9 | 5.0 | 7.6 | | | 4.5* | 4.5* | 7.2 | | | | | | | | | 4.0* | 4.0* | 6.6 | | |
| | -3.0 | 21.5 | 22.4* | 10.6 | 15.5* | 6.8 | 10.2* | | | | | 5.7* | 5.7* | 5.1 | | | | | | | | | | | | | |
| -4.5 | 15.1* | 15.1* | 8.4* | 8.4* | | | | | | | | | | | | | | | | | | | | | | | |
| -6.0 | | | | | | | | | | | | | | | | | | | | | | | | | | | |
| LC Blade up | 10.5 | | | | | | | | | | | 9.6* | 9.6* | 5.3 | | | | | | | | | | 9.0* | 9.0* | 4.0 | |
| | 9.0 | | | | | | | | | | | 7.0 | 8.5* | 6.9 | | | | | | | | | 5.9 | 6.4* | 7.7 | | |
| | 7.5 | | | | | | | | | | | 5.5 | 7.7 | 7.9 | | | | | | | | | 4.8 | 6.1* | 8.6 | | |
| | 6.0 | 12.8* | 12.8* | 13.3* | 13.3* | 9.1 | 11.3* | 6.1 | 8.4 | | | 4.8 | 6.7 | 8.5 | | | | | | | | | 4.4 | 6.1 | 4.3 | 5.9 | 9.2 |
| | 4.5 | 21.4* | 21.4* | 13.4 | 15.8* | 8.9 | 11.8 | 6.1 | 8.4 | | | 4.5 | 6.2 | 8.8 | | | | | | | | | 4.4 | 6.0 | 4.0 | 5.5 | 9.4 |
| | 3.0 | 18.0* | 18.0* | 13.1 | 16.9* | 8.5 | 11.5 | 6.0 | 8.3 | | | 4.4 | 6.2 | 8.8 | | | | | | | | | 4.2 | 5.9 | 3.9 | 5.4 | 9.5 |
| | 1.5 | 10.0* | 10.0* | 12.2 | 16.9* | 8.1 | 11.5 | 5.7 | 8.1 | | | 4.4 | 6.1 | 8.8 | | | | | | | | | 4.1 | 5.8 | 3.9 | 5.6 | 9.3 |
| | 0 | 17.1* | 17.1* | 11.6 | 17.0* | 7.7 | 11.1 | 5.5 | 7.8 | | | 4.5 | 6.3 | 8.6 | | </ | | | | | | | | | | | |

Stick 3.70 m

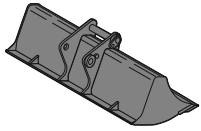
| Under-carriage | 3.0 m | | 4.5 m | | 6.0 m | | 7.5 m | | 9.0 m | | m | | | |
|----------------|-------|-------|-------|-------|-------|------|-------|-----|-------|-----|------|------|------|-----|
| | m | | | | | | | | | | | | | |
| MLC | 10.5 | | | 7.8* | 7.8* | | | | | | 7.0* | 7.0* | 5.0 | |
| | 9.0 | | | | | 7.2* | 7.2* | | | | 5.6 | 5.8* | 7.0 | |
| | 7.5 | | | | | 7.3* | 7.3* | 5.1 | 6.9* | | 4.1 | 5.3* | 8.3 | |
| | 6.0 | | | | | 7.4 | 8.0* | 5.2 | 7.7* | | 3.4 | 5.2* | 9.1 | |
| | 4.5 | 12.7* | 12.7* | 11.0* | 11.0* | 7.2 | 10.0* | 5.1 | 8.4 | 3.5 | 6.2 | 3.0 | 5.1* | 9.6 |
| | 3.0 | 19.7 | 21.5* | 10.7 | 15.8* | 7.0 | 11.4 | 4.9 | 8.3 | 3.4 | 6.1 | 2.8 | 5.1 | 9.9 |
| | 1.5 | 18.5 | 22.1* | 9.9 | 16.7* | 6.5 | 11.2 | 4.6 | 8.2 | 3.3 | 5.9 | 2.7 | 5.0 | 9.9 |
| | 0 | 16.8 | 18.3* | 9.0 | 16.6* | 6.0 | 11.1 | 4.3 | 7.9 | 3.1 | 5.8 | 2.7 | 5.1 | 9.7 |
| | -1.5 | 16.2 | 21.0* | 8.5 | 16.7* | 5.7 | 10.7 | 4.1 | 7.6 | 3.0 | 5.7 | 2.9 | 5.4 | 9.3 |
| | -3.0 | 16.2 | 25.1* | 8.4 | 16.5* | 5.5 | 10.6 | 3.9 | 7.4 | | | 3.3 | 4.9* | 8.5 |
| -4.5 | 16.5 | 21.8* | 8.5 | 14.6* | 5.5 | 9.2* | | | | | 3.4* | 3.4* | 7.4 | |
| -6.0 | 10.8* | 10.8* | | | | | | | | | 8.3* | 8.3* | 3.7 | |
| MLC Blade up | 10.5 | | | 7.8* | 7.8* | | | | | | 7.0* | 7.0* | 5.0 | |
| | 9.0 | | | | | 7.2* | 7.2* | | | | 5.8* | 5.8* | 7.0 | |
| | 7.5 | | | | | 7.3* | 7.3* | 5.5 | 6.9* | | 4.5 | 5.3* | 8.3 | |
| | 6.0 | | | | | 7.9 | 8.0* | 5.5 | 7.7* | | 3.7 | 5.2* | 9.1 | |
| | 4.5 | 12.7* | 12.7* | 11.0* | 11.0* | 7.7 | 10.0* | 5.5 | 8.4 | 3.8 | 6.2 | 3.3 | 5.1* | 9.6 |
| | 3.0 | 20.7 | 21.5* | 11.3 | 15.8* | 7.5 | 11.5 | 5.3 | 8.3 | 3.7 | 6.1 | 3.0 | 5.1 | 9.9 |
| | 1.5 | 19.8 | 22.1* | 10.6 | 16.7* | 7.0 | 11.3 | 5.0 | 8.2 | 3.6 | 6.0 | 3.0 | 5.0 | 9.9 |
| | 0 | 18.2 | 18.3* | 9.7 | 16.6* | 6.5 | 11.2 | 4.7 | 7.9 | 3.4 | 5.8 | 3.0 | 5.1 | 9.7 |
| | -1.5 | 17.6 | 21.0* | 9.2 | 16.7* | 6.2 | 10.8 | 4.5 | 7.6 | 3.3 | 5.7 | 3.2 | 5.5 | 9.3 |
| | -3.0 | 17.5 | 25.1* | 9.1 | 16.5* | 6.0 | 10.7 | 4.3 | 7.5 | | | 3.6 | 4.9* | 8.5 |
| -4.5 | 17.8 | 21.8* | 9.2 | 14.6* | 5.9 | 9.2* | | | | | 3.4* | 3.4* | 7.4 | |
| -6.0 | 10.8* | 10.8* | | | | | | | | | 8.3* | 8.3* | 3.7 | |
| MLC Blade down | 10.5 | | | 7.8* | 7.8* | | | | | | 7.0* | 7.0* | 5.0 | |
| | 9.0 | | | | | 7.2* | 7.2* | | | | 5.8* | 5.8* | 7.0 | |
| | 7.5 | | | | | 7.3* | 7.3* | 5.7 | 6.9* | | 4.7 | 5.3* | 8.3 | |
| | 6.0 | | | | | 8.0* | 8.0* | 5.8 | 7.7* | | 3.9 | 5.2* | 9.1 | |
| | 4.5 | 12.7* | 12.7* | 11.0* | 11.0* | 8.1 | 10.0* | 5.7 | 8.9* | 4.0 | 7.2* | 3.5 | 5.1* | 9.6 |
| | 3.0 | 21.5* | 21.5* | 11.8 | 15.8* | 7.8 | 11.7* | 5.5 | 9.4* | 3.9 | 7.9* | 3.2 | 5.3* | 9.9 |
| | 1.5 | 21.1 | 22.1* | 11.1 | 16.7* | 7.3 | 12.2* | 5.2 | 9.6* | 3.8 | 7.8* | 3.1 | 5.6* | 9.9 |
| | 0 | 18.3* | 18.3* | 10.3 | 16.6* | 6.8 | 12.1* | 4.9 | 9.5* | 3.6 | 7.7* | 3.2 | 6.1* | 9.7 |
| | -1.5 | 18.8 | 21.0* | 9.8 | 16.7* | 6.5 | 12.2* | 4.7 | 9.6* | 3.5 | 6.8* | 3.4 | 5.7* | 9.3 |
| | -3.0 | 18.7 | 25.1* | 9.6 | 16.5* | 6.4 | 12.1* | 4.5 | 8.5* | | | 3.8 | 4.9* | 8.5 |
| -4.5 | 19.1 | 21.8* | 9.7 | 14.6* | 6.3 | 9.2* | | | | | 3.4* | 3.4* | 7.4 | |
| -6.0 | 10.8* | 10.8* | | | | | | | | | 8.3* | 8.3* | 3.7 | |
| SLC | 10.5 | | | 7.8* | 7.8* | | | | | | 7.0* | 7.0* | 5.0 | |
| | 9.0 | | | | | 7.2* | 7.2* | | | | 5.8* | 5.8* | 7.0 | |
| | 7.5 | | | | | 7.3* | 7.3* | 5.6 | 6.9* | | 4.6 | 5.3* | 8.3 | |
| | 6.0 | | | | | 8.0* | 8.0* | 5.7 | 7.7* | | 3.8 | 5.2* | 9.1 | |
| | 4.5 | 12.7* | 12.7* | 11.0* | 11.0* | 7.9 | 10.0* | 5.6 | 8.4 | 3.9 | 6.2 | 3.3 | 5.1* | 9.6 |
| | 3.0 | 21.5* | 21.5* | 11.7 | 15.8* | 7.7 | 11.4 | 5.4 | 8.3 | 3.8 | 6.1 | 3.1 | 5.1 | 9.9 |
| | 1.5 | 21.1 | 22.1* | 11.0 | 16.7* | 7.2 | 11.2 | 5.1 | 8.2 | 3.7 | 6.0 | 3.0 | 5.0 | 9.9 |
| | 0 | 18.3* | 18.3* | 10.1 | 16.6* | 6.7 | 11.2 | 4.8 | 7.9 | 3.5 | 5.8 | 3.1 | 5.1 | 9.7 |
| | -1.5 | 18.8 | 21.0* | 9.6 | 16.7* | 6.3 | 10.8 | 4.6 | 7.6 | 3.4 | 5.7 | 3.2 | 5.4 | 9.3 |
| | -3.0 | 18.7 | 25.1* | 9.4 | 16.5* | 6.2 | 10.6 | 4.4 | 7.4 | | | 3.7 | 4.9* | 8.5 |
| -4.5 | 19.0 | 21.8* | 9.5 | 14.6* | 6.1 | 9.2* | | | | | 3.4* | 3.4* | 7.4 | |
| -6.0 | 10.8* | 10.8* | | | | | | | | | 8.3* | 8.3* | 3.7 | |
| LC | 10.5 | | | 7.8* | 7.8* | | | | | | 7.0* | 7.0* | 5.0 | |
| | 9.0 | | | | | 7.2* | 7.2* | | | | 5.8* | 5.8* | 7.0 | |
| | 7.5 | | | | | 7.3* | 7.3* | 5.9 | 6.9* | | 4.9 | 5.3* | 8.3 | |
| | 6.0 | | | | | 8.0* | 8.0* | 6.0 | 7.7* | | 4.1 | 5.2* | 9.1 | |
| | 4.5 | 12.7* | 12.7* | 11.0* | 11.0* | 8.4 | 10.0* | 6.0 | 8.4 | 4.2 | 6.2 | 3.6 | 5.1* | 9.6 |
| | 3.0 | 21.5* | 21.5* | 12.4 | 15.8* | 8.2 | 11.5 | 5.8 | 8.3 | 4.1 | 6.1 | 3.4 | 5.1 | 9.9 |
| | 1.5 | 22.1* | 22.1* | 11.9 | 16.7* | 7.7 | 11.3 | 5.5 | 8.2 | 3.9 | 6.0 | 3.3 | 5.0 | 9.9 |
| | 0 | 18.3* | 18.3* | 11.0 | 16.6* | 7.2 | 11.2 | 5.2 | 7.9 | 3.8 | 5.8 | 3.3 | 5.1 | 9.7 |
| | -1.5 | 20.9 | 21.0* | 10.5 | 16.7* | 6.9 | 10.8 | 4.9 | 7.6 | 3.7 | 5.7 | 3.5 | 5.5 | 9.3 |
| | -3.0 | 20.8 | 25.1* | 10.3 | 16.5* | 6.7 | 10.7 | 4.8 | 7.5 | | | 4.0 | 4.9* | 8.5 |
| -4.5 | 21.2 | 21.8* | 10.4 | 14.6* | 6.6 | 9.2* | | | | | 3.4* | 3.4* | 7.4 | |
| -6.0 | 10.8* | 10.8* | | | | | | | | | 8.3* | 8.3* | 3.7 | |
| LC Blade up | 10.5 | | | 7.8* | 7.8* | | | | | | 7.0* | 7.0* | 5.0 | |
| | 9.0 | | | | | 7.2* | 7.2* | | | | 5.8* | 5.8* | 7.0 | |
| | 7.5 | | | | | 7.3* | 7.3* | 6.4 | 6.9* | | 5.3 | 5.3* | 8.3 | |
| | 6.0 | | | | | 8.0* | 8.0* | 6.4 | 7.7* | | 4.4 | 5.2* | 9.1 | |
| | 4.5 | 12.7* | 12.7* | 11.0* | 11.0* | 8.9 | 10.0* | 6.4 | 8.5 | 4.5 | 6.2 | 3.9 | 5.1* | 9.6 |
| | 3.0 | 21.5* | 21.5* | 13.1 | 15.8* | 8.7 | 11.5 | 6.2 | 8.3 | 4.4 | 6.1 | 3.7 | 5.2 | 9.9 |
| | 1.5 | 22.1* | 22.1* | 12.8 | 16.7* | 8.3 | 11.3 | 5.9 | 8.2 | 4.3 | 6.0 | 3.6 | 5.0 | 9.9 |
| | 0 | 18.3* | 18.3* | 11.8 | 16.6* | 7.8 | 11.2 | 5.6 | 7.9 | 4.1 | 5.8 | 3.6 | 5.1 | 9.7 |
| | -1.5 | 21.0* | 21.0* | 11.3 | 16.7* | 7.4 | 10.9 | 5.4 | 7.7 | 4.0 | 5.7 | 3.9 | 5.5 | 9.3 |
| | -3.0 | 22.6 | 25.1* | 11.1 | 16.5* | 7.3 | 10.7 | 5.2 | 7.5 | | | 4.4 | 4.9* | 8.5 |
| -4.5 | 21.8* | 21.8* | 11.2 | 14.6* | 7.2 | 9.2* | | | | | 3.4* | 3.4* | 7.4 | |
| -6.0 | 10.8* | 10.8* | | | | | | | | | 8.3* | 8.3* | 3.7 | |
| LC Blade down | 10.5 | | | 7.8* | 7.8* | | | | | | 7.0* | 7.0* | 5.0 | |
| | 9.0 | | | | | 7.2* | 7.2* | | | | 5.8* | 5.8* | 7.0 | |
| | 7.5 | | | | | 7.3* | 7.3* | 6.6 | 6.9* | | 5.3* | 5.3* | 8.3 | |
| | 6.0 | | | | | 8.0* | 8.0* | 6.7 | 7.7* | | 4.6 | 5.2* | 9.1 | |
| | 4.5 | 12.7* | 12.7* | 11.0* | 11.0* | 9.2 | 10.0* | 6.6 | 8.9* | 4.7 | 7.2* | 4.1 | 5.1* | 9.6 |
| | 3.0 | 21.5* | 21.5* | 13.5 | 15.8* | 9.0 | 11.7* | 6.4 | 9.4* | 4.6 | 7.9* | 3.8 | 5.3* | 9.9 |
| | 1.5 | 22.1* | 22.1* | 13.3 | 16.7* | 8.6 | 12.2* | 6.1 | 9.6* | 4.5 | 7.8* | 3.7 | 5.6* | 9.9 |
| | 0 | 18.3* | 18.3* | 12.4 | 16.6* | 8.1 | 12.1* | 5.9 | 9.5* | 4.3 | 7.7* | 3.8 | 6.1* | 9.7 |
| | -1.5 | 21.0* | 21.0* | 11.9 | 16.7* | 7.8 | 12.2* | 5.6 | 9.6* | 4.2 | 6.8* | 4.0 | 5.7* | 9.3 |
| | -3.0 | 24.0 | 25.1* | 11.7 | 16.5* | 7.6 | 12.1* | 5.4 | 8.5* | | | 4.5 | 4.9* | 8.5 |
| -4.5 | 21.8* | 21.8* | 11.8 | 14.6* | 7.5 | 9.2* | | | | | 3.4* | 3.4* | 7.4 | |
| -6.0 | 10.8* | 10.8* | | | | | | | | | 8.3* | 8.3* | 3.7 | |

Height Can be slewed through 360° In longitudinal position of undercarriage Max. reach * Limited by hydr. capacity

The load values are quoted in tons (t) at stick end (without bucket), and may be swung 360° on firm and even ground. Adjacent values are valid for the undercarriage when in the longitudinal position. Capacities are valid for 600 mm wide track pads with adjusting cylinder in optimal position. Indicated loads are based on ISO 10567 standard and do not exceed 75% of tipping or 87% of hydraulic capacity (indicated via *). Without bucket cylinder, link and lever the lift capacities will increase by 410 kg. Lifting capacity of the excavator is limited by machine stability and hydraulic capacity.

According to European Standard, EN 474-5: In the European Union excavators have to be equipped with an overload warning device, a load diagram and automatic safety check valves on hoist cylinders and stick cylinder(s), when they are used for lifting operations which require the use of lifting accessories.

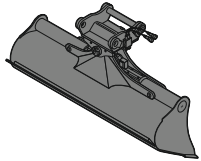
Available Attachments



Rigid Ditch Cleaning Bucket

GRL 100, for mounting to quick coupler SWA 66

| | | | | |
|---------------|----------------|-------|-------|-------|
| Cutting width | mm | 2,000 | 2,400 | 2,400 |
| Capacity | m ³ | 0.70 | 0.85 | 1.25 |
| Weight | kg | 546 | 635 | 685 |



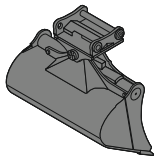
Tilttable Ditch Cleaning Bucket

GRL 100, 2 x 50° tilttable, for direct mounting

| | | | | | | |
|---------------|----------------|-------|-------|-------|-------|-------|
| Cutting width | mm | 2,000 | 2,000 | 2,200 | 2,400 | 2,400 |
| Capacity | m ³ | 1.20 | 1.45 | 1.65 | 0.85 | 1.45 |
| Weight | kg | 1,520 | 1,600 | 1,680 | 1,475 | 1,620 |

GRL 100, 2 x 50° tilttable, for mounting to quick coupler SWA 66

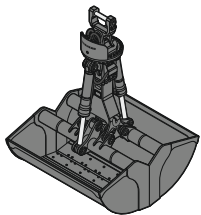
| | | | | | | |
|---------------|----------------|-------|-------|-------|-------|-------|
| Cutting width | mm | 2,000 | 2,000 | 2,200 | 2,400 | 2,400 |
| Capacity | m ³ | 1.20 | 1.45 | 1.65 | 0.85 | 1.45 |
| Weight | kg | 1,520 | 1,600 | 1,680 | 1,475 | 1,620 |



Tilt Bucket

SL 100, 2 x 50° tilttable, for mounting to quick coupler SWA 66

| | | | | | |
|---------------|----------------|-------|-------|-------|-------|
| Cutting width | mm | 1,600 | 1,600 | 1,700 | 1,800 |
| Capacity | m ³ | 1.45 | 1.75 | 1.85 | 1.60 |
| Weight | kg | 1,520 | 1,635 | 1,695 | 1,620 |
| HD-version | | | | X | |



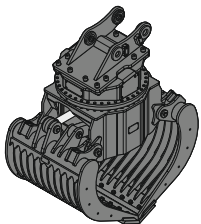
Clamshells

GMZ 30, earthmoving shell, for mounting to quick coupler SWA 48

| | | | | |
|---------------|----------------|-------|-------|-------|
| Cutting width | mm | 600 | 800 | 1,000 |
| Capacity | m ³ | 0.38 | 0.52 | 0.65 |
| Weight | kg | 1,025 | 1,110 | 1,190 |

GMZ 80, earthmoving shell, for mounting to quick coupler SWA 66

| | | | |
|---------------|----------------|-------|-------|
| Cutting width | mm | 1,200 | 1,400 |
| Capacity | m ³ | 1.40 | 1.60 |
| Weight | kg | 2,376 | 2,486 |



Sorting Grab

| | | perforated | | | ribbed | | | closed | | | stone tong |
|---|----------------|------------|-------|-------|--------|-------|-------|--------|-------|-------|------------|
| SG 30, for direct mounting | | | | | | | | | | | |
| Cutting width | mm | 1,000 | 1,200 | 1,400 | 1,000 | 1,200 | 1,400 | 1,000 | 1,200 | 1,400 | 1,020 |
| Capacity | m ³ | 0.85 | 1.00 | 1.15 | 0.75 | 0.90 | 1.05 | 0.85 | 1.00 | 1.15 | 0.85 |
| Weight | kg | 1,700 | 1,570 | 1,850 | 1,775 | 1,885 | 1,990 | 1,730 | 1,810 | 1,890 | 1,765 |
| SG 30, for mounting to quick coupler SWA 48 | | | | | | | | | | | |
| Cutting width | mm | 1,000 | 1,200 | 1,400 | 1,000 | 1,200 | 1,400 | 1,000 | 1,200 | 1,400 | 1,020 |
| Capacity | m ³ | 0.85 | 1.00 | 1.15 | 0.75 | 0.90 | 1.05 | 0.85 | 1.00 | 1.15 | 0.85 |
| Weight | kg | 1,700 | 1,570 | 1,850 | 1,775 | 1,885 | 1,990 | 1,730 | 1,810 | 1,890 | 1,765 |
| SG 40, for mounting to quick coupler SWA 48 and SWA 66 | | | | | | | | | | | |
| Cutting width | mm | 1,100 | 1,300 | | 1,100 | 1,300 | | | | | |
| Capacity | m ³ | 1.30 | 1.60 | | 1.10 | 1.40 | | | | | |
| Weight | kg | 2,230 | 2,800 | | 2,320 | 2,900 | | | | | |

Serial Equipment

Undercarriage

- Lashing eyes
- Sprocket with dirt ejector
- Track and carrier rollers, sealed and lifetime-lubricated

Uppercarriage

- Anti-skid surfaces
- Automatic swing brake lock
- Centralised lubrication system (automatic)
- DEF tank filling indicator
- DEF tank lockable access hatch
- Engine hood with gas spring opening
- Filters accessible from ground level
- Handrails
- Hydraulic oil level, visible from ground level
- Lockable fuel tank cap
- Lockable service doors
- Main switch, manual, lockable
- Protection grid on radiator fan
- Sound insulation
- Swing drive gearbox oil level, visible from the cab
- Swing-out radiators
- Windshield washer fluid tank

Hydraulic System

- Filter with integrated fine filters
- Hydraulic pressure measuring ports
- Liebherr Positive Control system with 2 independent circuits
- Magnetic rod
- Pressure accumulator for controlled lowering of equipment with engine turned off

Engine

- Air filter with automatic dust ejector
- Automatic engine idling / speed increase, controlled via joystick sensors
- Common-Rail injection system
- Exhaust gas after-treatment system – DOC + DPF + SCR
- Fixed geometry turbocharger
- Fuel fine filter
- Fuel pre-filter and water separator
- Fuel priming pump
- Intercooler
- Power Pack EU Stage V
- Stepless adjustable engine speed

Operator's Cab

- 7" multifunction colour touchscreen
- Air conditioning, automatic, tri-zone, controlled via display
- Armrests adjustable in width, height and inclination
- Bottle holder
- Cab air filters housing, accessible from ground level
- Cab door sliding windows
- Cigarette lighter
- Coat hook
- DEF consumption on touchscreen
- DEF level on touchscreen
- Electric socket in cabin (12 V)
- Electric socket in cabin (24 V)
- Emergency hammer
- Engine oil level on touchscreen
- Fuel consumption on touchscreen
- Fuel level on touchscreen
- Hydraulic oil level on touchscreen
- Interior lighting
- Laminated right hand side window
- LiDAT Plus (Liebherr data transfer system) *
- Mechanical hour meters, visible from ground level
- Movement priority between swing and boom, adjustable via touchscreen
- Movement priority for stick-in, adjustable via touchscreen
- Rain hood over front window opening
- Rearview mirror
- Rear view monitoring camera
- Rear window emergency exit
- Roll-down sun blinds for windscreen and roof window
- ROPS safety cab structure (ISO 12117-2)
- Rubber floor mat, fixed on floor and removable
- Shortcut button on joystick configurable
- Storage box
- Storage nets
- Storage spaces
- Tilttable console left
- Tinted windows
- Visco-elastic damping
- Windscreen wiper and washer
- Work mode selector

Equipment

- Boom cylinders regeneration
- Pipe fracture safety valve for stick cylinder
- Pipe fracture safety valves for boom cylinders
- Pivot points made of cast steel
- SAE split flanges on high pressure lines
- Stick cylinder regeneration

* optionally extendable after one year

Equipment Standard/Option

Undercarriage

| | |
|--|---|
| Chain guide 1 piece | • |
| Chain guide 3 pieces | + |
| Chain guide 4 pieces | + |
| Cover and base plate for undercarriage centre section | • |
| Dozer and stabilizer blade 3,000 mm | + |
| Dozer and stabilizer blade 3,350 mm | + |
| Reinforced cover and base plate for undercarriage centre section | + |
| Special painting | + |
| Steps | • |
| Steps wide | + |
| Track pads triple grouser 600 mm | • |
| Track pads triple grouser 700/800/900 mm | + |
| Track pads triple grouser reinforced 600/700/800 mm | + |
| Tracks, sealed and greased | • |
| Tracks, sealed and greased, reinforced | + |
| Undercarriage LC | + |
| Undercarriage NLC | + |
| Undercarriage SLC | + |
| Undercarriage storage compartment | + |

Uppercarriage

| | |
|---|-----|
| Air pre-filter with cyclonical dust trap | + |
| Counterweight standard 8.0 t | • |
| Electric socket on uppercarriage (24 V) | + |
| Extended tool set including tool box | + |
| Fuel anti-theft protection | + |
| Headlight on uppercarriage, front left, LED+, 1 piece, protection included | +1) |
| Headlight on uppercarriage, front right, LED, 1 piece, protection included | •1) |
| Headlight on uppercarriage, front right, LED+, 1 piece, protection included | +1) |
| Headlight on uppercarriage, lateral right, LED+, 1 piece | +1) |
| Headlights on uppercarriage, rear, LED+, 2 pieces | +1) |
| Lighting for tank area | +1) |
| Lighting for uppercarriage access | +1) |
| Pre-heating system for fuel | + |
| Reflective warning stickers | + |
| Reversible fan drive | + |
| Rotating beacons on uppercarriage, rear, LED, 2 pieces | + |
| Skyview 360° | + |
| Special painting | + |
| Tank refilling pump fuel | + |
| Tool set including storage case | • |
| Uppercarriage bottom protection | + |



Hydraulic System

| | |
|--|---|
| Bypass filter for hydraulic oil | + |
| Liebherr hydraulic oil | • |
| Liebherr hydraulic oil, adapted for extreme climate conditions | + |
| Liebherr hydraulic oil, biodegradable | + |
| High pressure circuit bypass | + |
| High pressure circuit flow summation | + |



Engine

| | |
|--|-----|
| Automatic engine shutdown after idling | + |
| Engine shut-down with overrun | + |
| Lighting for engine compartment | +1) |



Operator's Cab

| | |
|--|-----------------|
| 2" seat belt with retractor | • |
| 3" seat belt with retractor, orange colour | + |
| 4-points seat belt | + |
| Acoustic travel alarm deactivatable | + |
| Auxiliary heater programmable | + |
| Bottom windscreen wiper | + |
| Coming/Leaving Home | + ¹⁾ |
| Cool box (12 V) | + |
| Dark tinted windows | + |
| Electronic immobiliser | + |
| Emergency stop in cab | + |
| FGPS front guard | + |
| FGPS front guard tiltable | + |
| Filter for hydraulic hammer return flow | + |
| Fire extinguisher | + |
| First-aid box | + |
| Footrest | + |
| FOPS top guard | + |
| FOPS top guard flat | + |
| Handrests elevated for joysticks | + |
| Headlights on cab, front, LED, 2 pieces | • ¹⁾ |
| Headlights on cab, front, LED+, 2 pieces | + ¹⁾ |
| Headlights on cab roof, front, LED+, 2 pieces | + ¹⁾ |
| High pressure circuit switchable on pedals or mini-joystick | + |
| High pressure circuit with Tool Control (20 attachment adjustments on display) | + |
| Impact resistant one-piece windscreen | + |
| Impact resistant roof window | + |
| Integral protection guard | + |
| Laminated roof window | • |
| Lightbar on cabin | + |
| Lighting for cabin access | + ¹⁾ |
| Luminosity control (LED+ headlights) | + ¹⁾ |
| Medium pressure circuit | + |
| Mini-joysticks proportional | + |
| Movement restriction for boom | + |
| Movement restriction for stick | + |
| Operator seat Comfort | • |
| Operator seat Premium | + |
| Overload warning system | + |
| Preparation for machine guidance system | + |
| Preparation for tiltrotator | + |
| Radio Comfort | + |
| Radio pre-installation | • |
| Retractable laminated two-piece windscreen | • |
| Right hand side view monitoring camera | • |
| Roof sun shield | + |
| Roof window wiper | + |
| Rotating beacon on cabin, LED, 1 piece | + |
| Seat belt reminder | + |
| Special painting | + |
| Sun visor | + |
| Switch between high pressure and bucket cylinder controls | + |
| Windscreen bottom protection grid | + |



Equipment

| | |
|--|-----------------|
| Bucket cylinder rod protection | + |
| Centralised lubrication extended for connecting link | + |
| Grapple hydraulic lines (bucket cylinder inactive) | + |
| Headlight guard on boom, right | + |
| Headlight guards on boom, right and left | + |
| Headlight on boom, left, LED+, 1 piece | + ¹⁾ |
| Headlight on boom, right, LED, 1 piece | • ¹⁾ |
| Headlight on boom, right, LED+, 1 piece | + ¹⁾ |
| Headlight on stick, bottom, LED+, 1 piece | + ¹⁾ |
| Leak oil line for attachment | + |
| Lifting eye on stick 16.0 t | + |
| LIKUFIX electric signal plug | + |
| LIKUFIX for quick coupler SWA 48 hydraulic | + |
| LIKUFIX for quick coupler SWA 66 hydraulic | + |
| Load holding valve for bucket cylinder | + |
| Lubrication hoses protection on stick | + |
| Mono boom 6.20 m | + |
| Quick coupler SWA 48 hydraulic | + |
| Quick coupler SWA 48 mechanical | + |
| Quick coupler SWA 66 hydraulic | + |
| Quick coupler SWA 66 mechanical | + |
| Security for hoist cylinders | + |
| Special painting | + |
| Stick 2.50 m | + |
| Stick 3.20 m | + |
| Stick 3.70 m | + |
| Stick bottom protection | + |
| Tool Management | + |
| Two-piece boom 6.40 m | + |

• = Standard, + = Option

¹⁾ Equipment not individually available, but only as predefined lighting packages
Non-exhaustive list, please contact us for further information.

Options and/or special equipments, supplied by vendors other than Liebherr, are only to be installed with the knowledge and approval of Liebherr in order to retain warranty.

